

**University of Missouri System
Undergraduate Financial Aid Summary Report
FY2000-FY2004**

(Missouri Resident Undergraduate Students)

Report Prepared by
Dr. La Shonda Carter-Boone
Senior Institutional Research Analyst

Office of Institutional Research 15 it u s5Dan9RP

University of Missouri System
Undergraduate Financial Aid Summary Report
FY2000-FY2004
(Missouri Resident Undergraduates)

Executive Summary

The *Undergraduate Financial Aid Summary Report* includes undergraduate financial aid distribution patterns for the University of Missouri System and the four campuses from fiscal year 1999-00 (FY00) through fiscal year 2003-04 (FY04). In the first part of this report eight questions are addressed at the UM System level:

1. How many students received aid and what type of aid was received?
2. Has grant aid kept pace with increases in educational and required fees?
3. How has the distribution of institutional gift aid changed over the past five years?
4. What percent of educational and required fees is met by grant aid?

- Missouri resident undergraduate students in the lower income categories have the highest grant aid as a percentage of educational and required fees. In FY04, grant aid as a percent of tuition and required fees decreased for all income categories compared to FY00 (Table 1.2).
- Overall, the University continues to experience an increase in the number of students with income greater than \$60,000 who have financial need (Figure 1.3).
- Students with incomes less than \$40,000 have the highest amount of financial need and receive larger total financial aid awards than higher income students. However, lower income students continue to have the largest amount of unmet financial need (Figure 1.4).
- Over the past five years, the unmet financial need of lower income students has nearly doubled (Figure 1.5).
- Higher income students borrow a significant amount of the money that the family is expected to pay out-of-pocket (Table 1.3).

Campus-specific variations from System trends:

- On the Columbia campus the average amount of grant aid awarded to students in lower incomes exceeded educational and required fees in FY00 and covered 90% of these fees in FY04 (Table 2.2).
- The Kansas City and St. Louis campuses continue to experience significant increases in the number of low-income students that have financial need (Figures 3.3 and 5.3).
- Low-income students on the Kansas City and St. Louis campuses have a much larger amount of unmet need when compared to students in the same income categories on the other campuses (Figures 3.4 and 5.4).

Undergraduate resident vs. non-resident trends:

- Average grant aid to non-resident undergraduates has decreased nearly 12% over the past five years. In FY04 grant aid to non-resident undergraduates was nearly double the average grant awarded to residents (\$6,427 vs. \$3,495).
- In general, non-resident undergraduates receive institutional grant awards more than double the amount awarded to resident undergraduates. In FY04, non-resident undergraduates without financial need received the largest average institutional grant award, \$5,482. During that same year, resident undergraduates with financial need received an average institutional gift award of \$1,319.

The contextual basis of financial aid distribution

Very few undergraduates attending the University of Missouri pay the entire cost of attendance out-of-pocket. The majority of students receive some type of financial assistance to attend the University in the form of grants, scholarships, work study or loans. In addition, financial assistance comes from a wide variety of sources including the state and federal governments, profit and non-profit organizations, and the University (institutional gift aid). Finally, a significant amount of financial aid that is distributed is based on financial need, i.e. it is documented that the student's family cannot afford the entire cost of attendance. A student must complete a Free Application for Federal Student Aid (FASFA) in order to determine the extent of financial need and the type and amount of aid based on need that can be awarded.

Many of the tables and figures throughout this report reference terms such as budgeted cost of attendance, financial need, grant aid, and unmet need. Assuming that a student has completed a FASFA, Figure A.1 is provided to give an overview of how a student's financial aid package is determined.

Figure A.1
Example of How Financial Need is Determined and Aid is Distributed

| | | |
|----------|------------------------------------|--|
| \$14,000 | Budgeted Cost of Attendance | { includes educational & required fees, books, and living expenses |
| (4,000) | Less: Expected Family Contribution | |
| 10,000 | Financial Need | |
| (3,500) | Less: Grant Aid | { includes need and non-need based grant aid from federal, state, institutional, and other sources |
| 6,500 | Remaining Need | |
| (1,000) | Less: College Work Study | |
| (4,000) | Less: Need-Based Loans | |
| (500) | Less: Alternative Loans | |
| \$1,000 | Unmet Need | |

Foremost, a BUDGETED COST OF ATTENDANCE (COA) is determined for every student that completes a FASFA. The COA varies by student and is based on factors such as residency status, load status (full or part-time), and living arrangements (on or off-campus). Next, the amount that the family is expected to contribute to cover the COA is determined based on several factors including the family's adjusted gross income. A student's financial need is determined by subtracting the EXPECTED FAMILY CONTRIBUTION from the budgeted

Section I

System-wide Financial Aid Trends of Full-Time, Degree-Seeking Missouri Undergraduates from FY00 to FY04

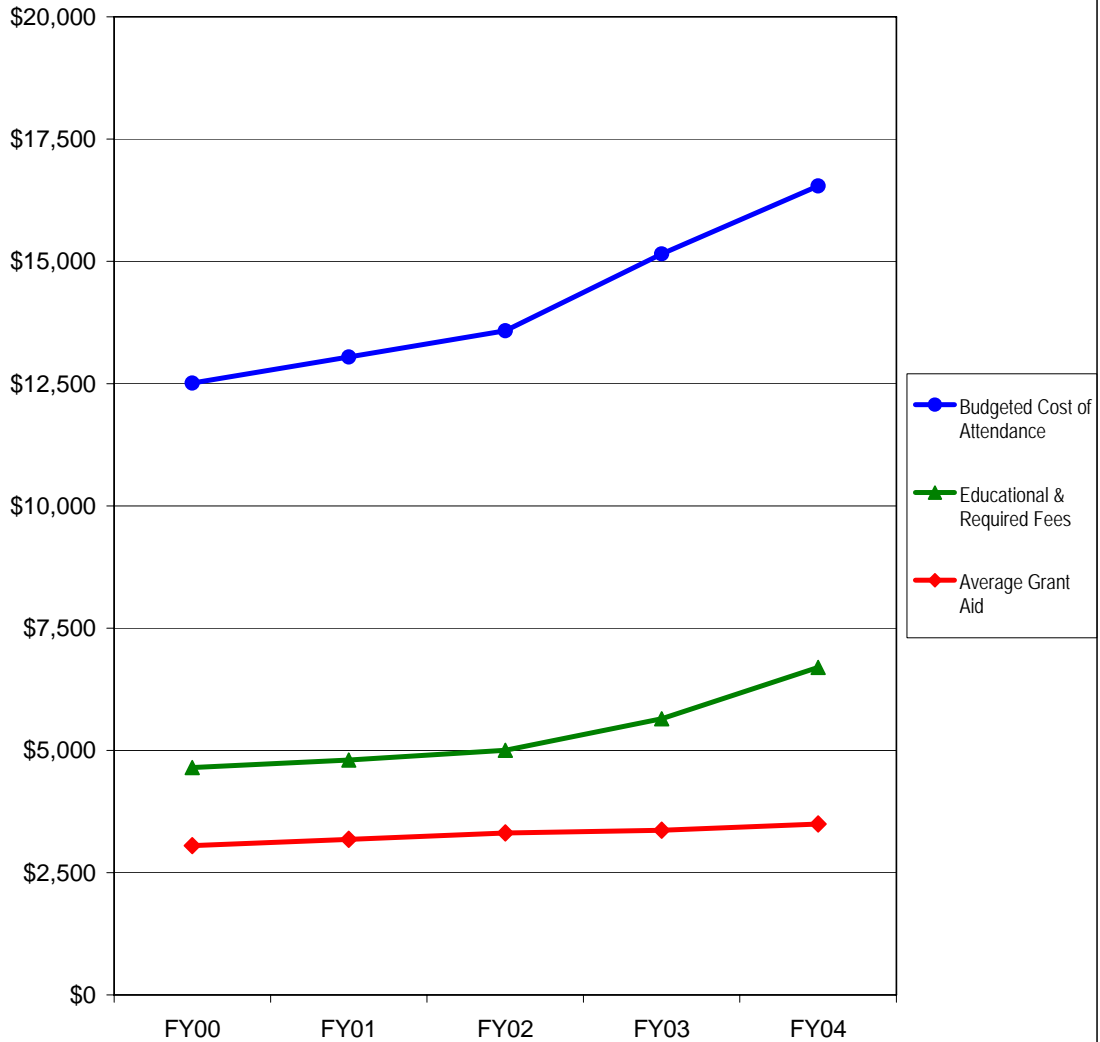
PLEASE NOTE:

5. How has the number of aid recipients with need changed by income level?

There has been a change in the number of aid recipients with need by income level. The number of aid recipients with need and incomes lower than \$40,000 increased slightly.

| | FY00 | FY01 | FY02 | FY03 | FY04 | 5-yr # Change | 5-yr % Change |
|--------------------------------------|--------------|--------------|--------------|--------------|--------------|------------------|------------------|
| Completed FAFSA, did not have a need | 3,394 | 3,669 | 4,091 | 4,054 | 4,025 | 631 | 18.6% |
| Grant aid, no FAFSA | <u>3,704</u> | <u>3,891</u> | <u>3,757</u> | <u>3,593</u> | <u>3,615</u> | <u>-89</u> | -2.4% |

Figure 1.2
Educational and Required Fees vs. 9-Month Cost of Attendance and Grant Aid for Full-time Undergraduate Missouri Residents at the University of Missouri System, FY00 - FY04



Source:
 IR&P/RS 2/05

| | FY00 | FY01 | FY02 | FY03 | FY04 | 5-yr # Change | 5-yr % Change |
|----------------------------|----------|----------|----------|----------|----------|------------------|------------------|
| Budgeted Cost of Attendanc | \$12,513 | \$13,043 | \$13,581 | \$15,153 | \$16,542 | \$4,029 | 32.2% |
| Educational & Required Fee | \$4,651 | \$4,806 | \$5,003 | \$5,647 | \$6,697 | \$2,046 | 44.0% |
| Average Grant Aid | \$3,052 | \$3,181 | \$3,315 | \$3,369 | \$3,495 | \$443 | 14.5% |

Table 1.1

Average Institutional Grant Aid Distributed to Resident, Full-time, Degree-Seeking Undergraduates by Financial Need at the University of Missouri System, FY00 - FY04

| | FY00 | | FY01 | | FY02 | | FY03 | | FY04 | |
|--------------|--------|---------|--------|---------|--------|---------|--------|---------|--------|---------|
| | N | Mean | N | Mean | N | Mean | N | Mean | N | Mean |
| With Need | 11,320 | \$1,197 | 11,291 | \$1,181 | 11,731 | \$1,178 | 13,030 | \$1,204 | 14,257 | \$1,319 |
| Without Need | 7,040 | 1,736 | 7,560 | 1,707 | 7,848 | 1,621 | 7,647 | 1,558 | 7,640 | 1,651 |

Source: UIDS
IR&P/LCB 3/05

Table 1.2

| Income Level | Grant Aid | % Educational & Required Fees | Grant Aid | % Educational & Required Fees |
|--------------|-----------|-------------------------------|-----------|-------------------------------|
| < | | | | |

Figure 1.3
Number of Full-time, Degree-Seeking 9-Month Undergraduate
Missouri Residents with Financial Need by Income Level at the
University of Missouri System, FY00 - FY04

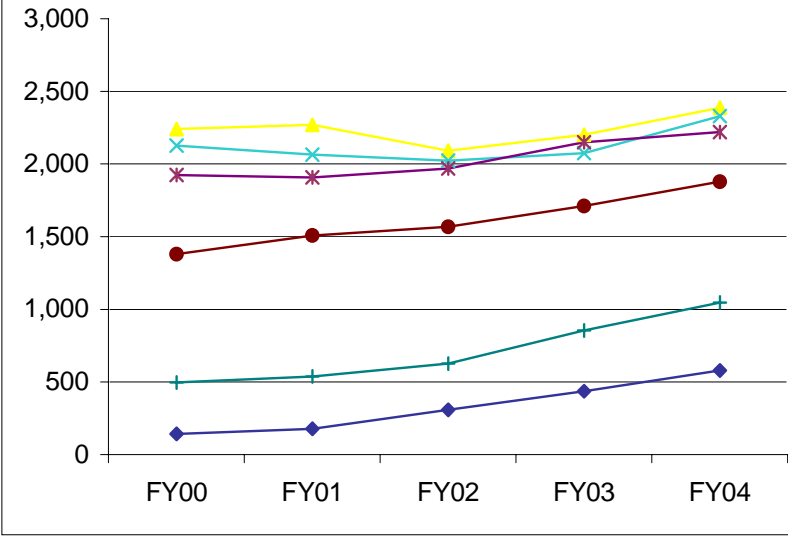


Figure 1.5
Average Amount of Unmet Financial Need by Income Level

a G221.7 552 m ()-5.3(Inc)4u 8.67.11 0 0 1628 508.0270 0 1628 508.0270 0 161.7 A6n

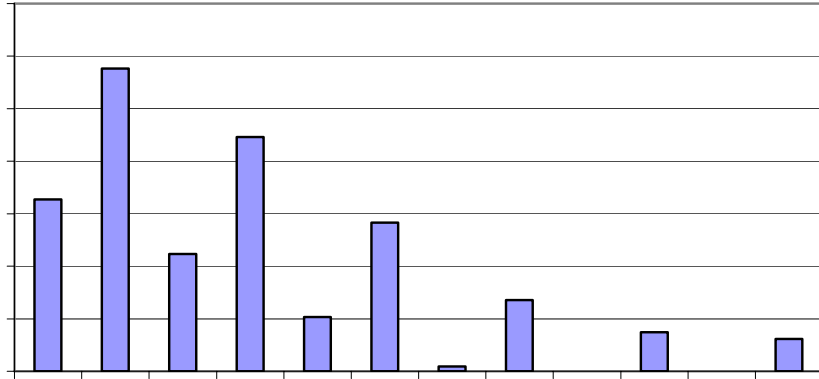


Table 1.3

| | FY00 | FY01 | FY02 | FY03 | FY04 | FY00 | FY01 | FY02 | FY03 | FY04 | # Change FY00-FY04 | % Change FY00-FY04 |
|--|-------------|-------------|-------------|-------------|-------------|-------------|-------------|-------------|-------------|-------------|-------------------------------|-------------------------------|
| Total Enrolled for 9 months (N) | 2,240 | 2,270 | 2,091 | 2,202 | 2,388 | | | | | | 148 | 7% |

Table 1.3 (Continued)

| | FY00 | FY01 | FY02 | FY03 | FY04 | FY00 | FY01 | FY02 | FY03 | FY04 | # Change FY00-FY04 | % Change FY00-FY04 |
|---------------------------------|----------|----------|----------|----------|----------|------|------|------|------|------|-----------------------|-----------------------|
| Total Enrolled for 9 months (N) | 1,381 | 1,508 | 1,568 | 1,712 | 1,879 | | | | | | 498 | 36% |
| Cost of Attendance | \$12,364 | \$12,915 | \$13,562 | \$14,854 | \$16,235 | | | | | | \$3,872 | 31% |

Section II

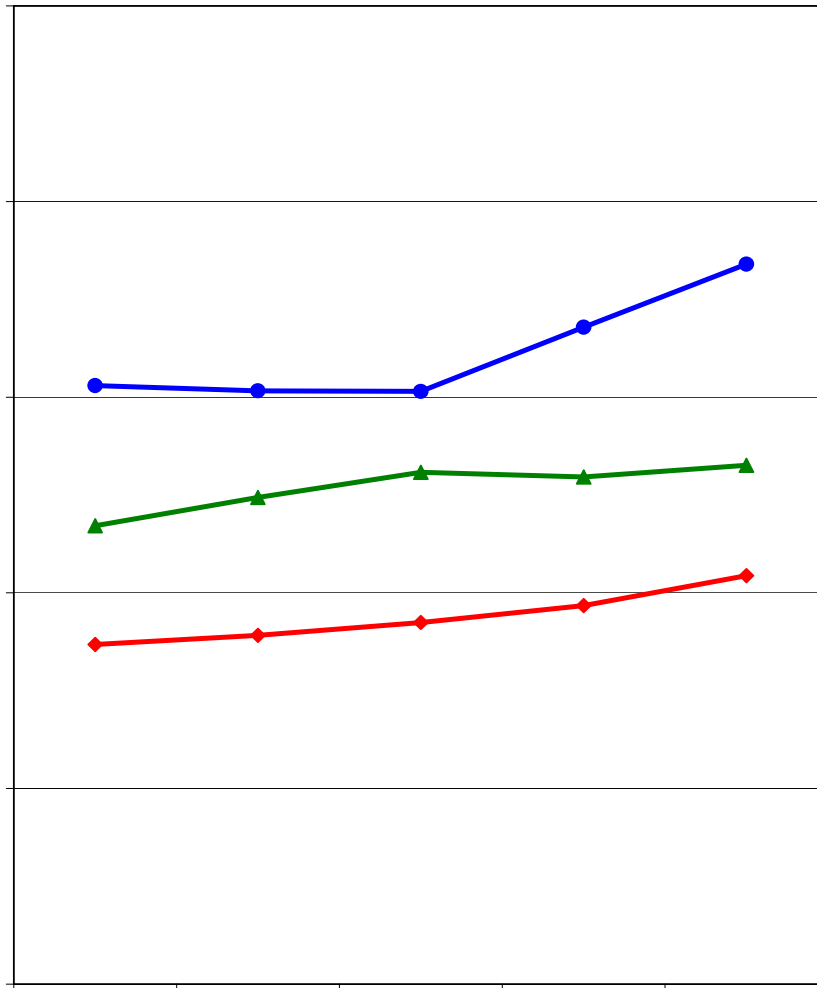
Campus-Level Financial Aid Trends of Full-Time, Degree-Seeking Missouri Undergraduates from FY00 to FY04

UM-Columbia (Table and Figure 2 series)

UM-Kansas City (Table and Figure 3 series)

UM-Rolla (Table and Figure 4 series)

UM-St. Louis (Table and Figure 5 series)



| | FY00 | FY01 | FY02 | FY03 | FY04 | 5-yr # Change | 5-yr % Change |
|---|--------------|--------------|--------------|--------------|--------------|------------------|------------------|
| Completed FAFSA, did not have a need | 2,195 | 2,453 | 2,772 | 2,815 | 2,821 | 626 | 28.5% |
| Grant aid, no FAFSA | <u>2,491</u> | <u>2,521</u> | <u>2,460</u> | <u>2,370</u> | <u>2,484</u> | -7 | -0.3% |
| Aid recipients with no need | 4,686 | 4,974 | 5,232 | 5,185 | 5,305 | 619 | 13.2% |
| Aid recipients with need* | 6,118 | 6,066 | 6,058 | 6,716 | 7,360 | 1,242 | 20.3% |
| Full pay / No aid | 3,471 | 3,565 | 3,696 | 3,869 | 4,176 | 705 | 20.3% |
| Total of all full- time, Degree-Seeking MO UG | 14,275 | 14,605 | 14,986 | 15,770 | 16,841 | 2,566 | 18.0% |

* All aid recipients with need completed a FAFSA and were not expected to pay the entire cost of attendance.

| | FY00 | FY01 | FY02 | FY03 | FY04 | 5-yr # Change | 5-yr % Change |
|----------------------------|----------|----------|----------|----------|----------|------------------|------------------|
| Budgeted Cost of Attendanc | \$12,200 | \$12,583 | \$13,681 | \$14,149 | \$15,557 | \$3,357 | 27.5% |
| Educational & Required Fee | \$4,581 | \$4,726 | \$4,887 | \$5,552 | \$6,558 | \$1,977 | 43.2% |
| Average Grant Aid | \$3,334 | \$3,551 | \$3,552 | \$3,660 | \$3,696 | \$362 | 10.9% |

Table 2.1**Average Institutional Grant Aid Distributed to Resident, Full-time, Degree-Seeking Undergraduates by Financial Need at the University of Missouri-Columbia, FY00 - FY04**

| | FY00 | | FY01 | | FY02 | | FY03 | | FY04 | |
|--------------|-------|---------|-------|---------|-------|---------|-------|---------|-------|---------|
| | N | Mean | N | Mean | N | Mean | N | Mean | N | Mean |
| With Need | 6,118 | \$1,556 | 6,066 | \$1,500 | 6,058 | \$1,524 | 6,716 | \$1,563 | 7,360 | \$1,707 |
| Without Need | 4,686 | 1,765 | 4,974 | 1,678 | 5,232 | 1,592 | 5,185 | 1,482 | 5,305 | 1,576 |

Source: UIDS
IR&P/LCB 3/05

Table 2.2**Total Grant Aid as % of Educational and Required Fees by Income Level at the University of Missouri-Columbia, FY00 & FY04**

| Income Level | FY00 | | FY04 | |
|-----------------------|-----------|-------------------------------|-----------|-------------------------------|
| | Grant Aid | % Educational & Required Fees | Grant Aid | % Educational & Required Fees |
| <\$20,000 | \$5,344 | 117% | \$6,428 | 98% |
| \$20,000 to \$40,00 | \$4,836 | 106% | \$5,880 | 90% |
| \$40,000 to \$60,000 | \$3,463 | 76% | \$4,773 | 73% |
| \$60,000 to \$80,000 | \$2,402 | 52% | \$3,016 | 46% |
| \$80,000 to \$100,000 | \$1,955 | 43% | \$2,612 | 40% |
| >\$100,000 | \$2,433 | 53% | \$2,157 | 33% |

Source: UIDS
IR&P/LCB 3/05

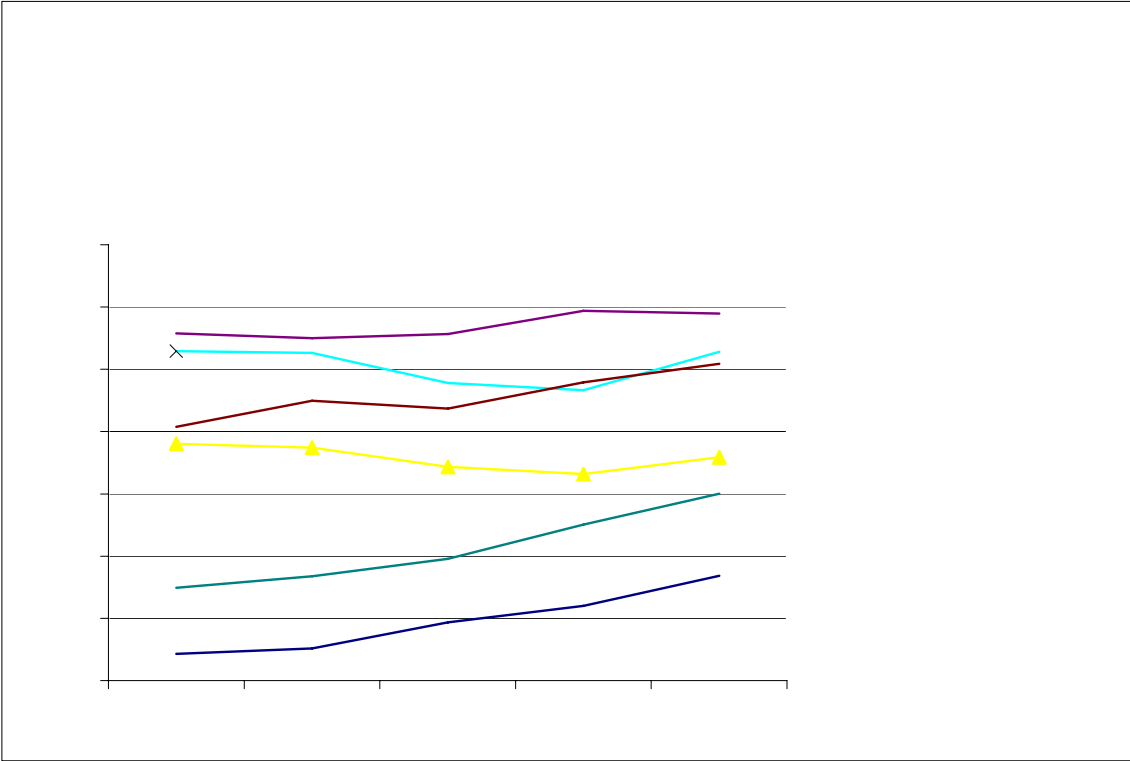


Figure 2.5
Average Amount of Unmet Financial Need by Income Level at
the UM-Columbia, FY00 vs. FY04

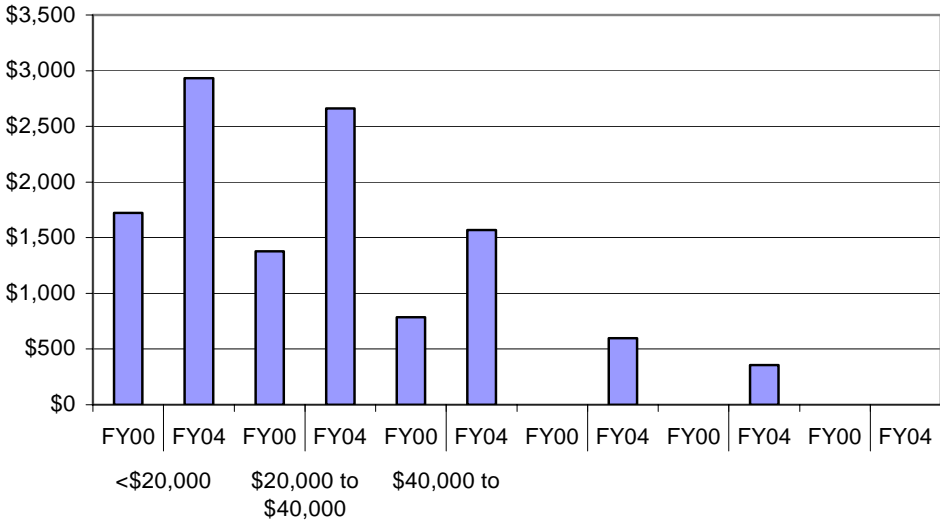
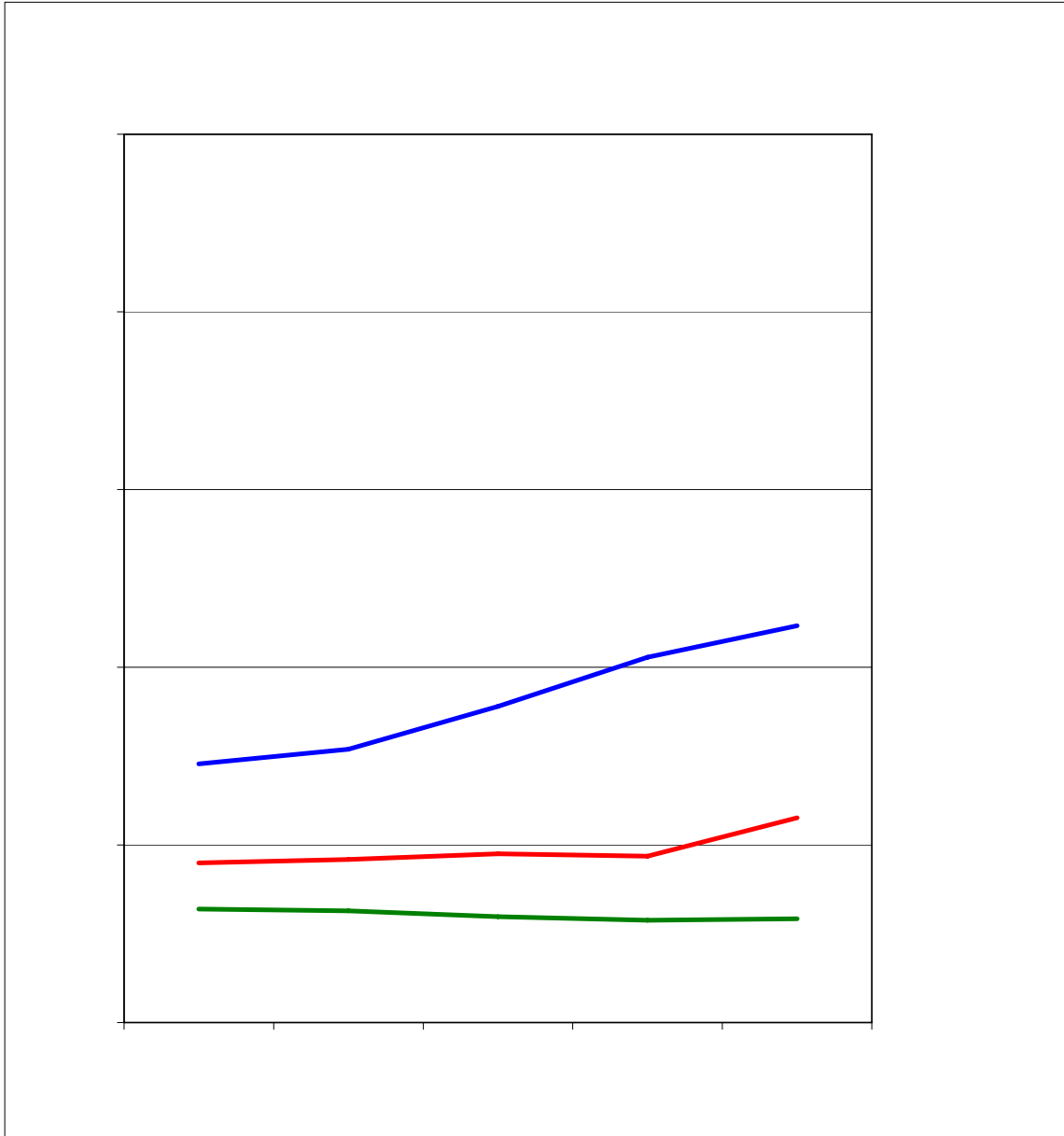


Table 2.3

| | FY00 | FY01 | FY02 | FY03 | FY04 | FY00 | FY01 | FY02 | FY03 | FY04 | # Change FY00-FY04 | % Change FY00-FY04 |
|---|--------------|--------------|--------------|--------------|--------------|------|------|------|------|------|-----------------------|-----------------------|
| Total Enrolled for 9 months (N) | 761 | 748 | 686 | 663 | 717 | | | | | | -44 | -6% |
| Cost of Attendance | \$12,272 | \$12,608 | \$13,099 | \$14,074 | \$15,527 | | | | | | \$3,255 | 27% |
| Less Expected Family Contribution* | <u>992</u> | <u>959</u> | <u>1,046</u> | <u>1,120</u> | <u>919</u> | 8% | 8% | 8% | 8% | 6% | -73 | -7% |
| Financial Need | 11,280 | 11,649 | 12,053 | 12,954 | 14,608 | 92% | 92% | 92% | 92% | 94% | 3,328 | 30% |
| Less Grant Aid | 5,344 | 5,682 | 6,060 | 6,246 | 6,428 | 44% | 45% | 46% | 44% | 41% | 1,084 | 20% |
| Unmet Need | \$5,936 | \$5,967 | \$5,993 | \$6,708 | \$8,180 | 48% | 47% | 46% | 48% | 53% | 2,244 | 38% |
| % Grant Aid that Met Financial Need | 47% | 49% | 50% | 48% | 45% | | | | | | | |
| Non-Grant Sources to Meet Remaining Unmet Financial Need | | | | | | | | | | | | |
| College Work Study | \$144 | \$173 | \$190 | \$252 | \$284 | 1% | 1% | 1% | 2% | 2% | 140 | 97% |
| Need-based Loans | 3,246 | 2,964 | 2,878 | 3,090 | 3,715 | 26% | 24% | 22% | 22% | 24% | 469 | 14% |
| Alternative Loans | 824 | 738 | 681 | 1,024 | 1,249 | 7% | 6% | 5% | 7% | 8% | 425 | 52% |
| Remaining Unmet Need | \$1,722 | \$2,092 | \$2,244 | \$2,342 | \$2,932 | 14% | 17% | 17% | 17% | 19% | 1,210 | 70% |
| *Amount Borrowed to meet EFC | \$303 | \$313 | \$300 | \$308 | \$370 | 2% | 2% | 2% | 2% | 2% | 67 | 22% |
| | FY00 | FY01 | FY02 | FY03 | FY04 | FY00 | FY01 | FY02 | FY03 | FY04 | # Change FY00-FY04 | % Change FY00-FY04 |
| Total Enrolled for 9 months (N) | 1,058 | 1,052 | 956 | 933 | 1,056 | | | | | | -2 | 0% |
| Cost of Attendance | \$12,155 | \$12,541 | \$13,088 | \$14,129 | \$15,527 | | | | | | \$3,372 | 28% |
| Less Expected Family Contribution* | <u>2,529</u> | <u>2,626</u> | <u>2,775</u> | <u>2,538</u> | <u>2,775</u> | 21% | 21% | 21% | 18% | 18% | 246 | 10% |
| Financial Need | 9,626 | 9,915 | 10,313 | 11,591 | 12,752 | 79% | 79% | 79% | 82% | 82% | 3,126 | 32% |

Table 2.3 (Continued)

| | FY00 | FY01 | FY02 | FY03 | FY04 | FY00 | FY01 | FY02 | FY03 | FY04 | # Change FY00-FY04 | % Change FY00-FY04 |
|---|--------------|--------------|--------------|--------------|---------------|------|------|------|------|------|-----------------------|-----------------------|
| Total Enrolled for 9 months (N) | 815 | 899 | 874 | 958 | 1,018 | | | | | | 203 | 25% |
| Cost of Attendance | \$12,216 | \$12,609 | \$13,151 | \$14,179 | \$15,600 | | | | | | \$3,384 | 28% |
| Less Expected Family Contribution* | <u>7,955</u> | <u>8,019</u> | <u>8,435</u> | <u>8,537</u> | <u>9,140</u> | 65% | 64% | 64% | 60% | 59% | 1,185 | 15% |
| Financial Need | 4,261 | 4,590 | 4,716 | 5,642 | 6,460 | 35% | 36% | 36% | 40% | 41% | 2,199 | 52% |
| Less Grant Aid | 2,402 | 2,896 | 3,031 | 3,196 | 3,016 | 20% | 23% | 23% | 23% | 19% | 614 | 26% |
| Unmet Need | \$1,859 | \$1,694 | \$1,685 | \$2,446 | \$3,444 | 15% | 13% | 13% | 17% | 22% | 1,585 | 85% |
| % Grant Aid that Met Financial Need | 56% | 63% | 64% | 57% | 49% | | | | | | | |
| Non-Grant Sources to Meet Remaining Unmet Financial Need | | | | | | | | | | | | |
| College Work Study | \$109 | \$124 | \$131 | \$171 | \$231 | 1% | 1% | 1% | 1% | 1% | 122 | 112% |
| Need-based Loans | 1,772 | 1,579 | 1,590 | 1,892 | 2,415 | 15% | 13% | 12% | 13% | 15% | 643 | 36% |
| Alternative Loans | 117 | 88 | 93 | 255 | 200 | 1% | 1% | 1% | 2% | 1% | 83 | 71% |
| Remaining Unmet Need | -\$139 | -\$97 | -\$129 | \$128 | \$598 | -1% | -1% | -1% | 1% | 4% | 737 | -530% |
| *Amount Borrowed to meet EFC | \$2,967 | \$3,115 | \$3,246 | \$3,396 | \$3,629 | 24% | 25% | 25% | 24% | 23% | 662 | 22% |
| | FY00 | FY01 | FY02 | FY03 | FY04 | FY00 | FY01 | FY02 | FY03 | FY04 | # Change FY00-FY04 | % Change FY00-FY04 |
| Total Enrolled for 9 months (N) | 298 | 335 | 391 | 501 | 601 | | | | | | 303 | 102% |
| Cost of Attendance | \$12,295 | \$12,631 | \$13,201 | \$14,265 | \$15,674 | | | | | | \$3,379 | 27% |
| Less Expected Family Contribution* | <u>8,576</u> | <u>9,186</u> | <u>9,361</u> | <u>9,922</u> | <u>10,305</u> | 70% | 73% | 71% | 70% | 66% | 1,729 | 20% |
| Financial Need | 3,719 | 3,445 | 3,840 | 4,343 | 5,369 | 30% | 27% | 29% | 30% | 34% | 1,650 | 44% |
| Less Grant Aid | 1,955 | 2,453 | 2,553 | 2,544 | 2,612 | 16% | 19% | 19% | 18% | 17% | 657 | 34% |
| Unmet Need | \$1,764 | \$992 | \$1,287 | \$1,799 | \$2,757 | 14% | 8% | 10% | 13% | 18% | 993 | 56% |
| % Grant Aid that Met Financial Need | 53% | 71% | 66% | 59% | 51% | | | | | | | |
| Non-Grant Sources to Meet Remaining Unmet Financial Need | | | | | | | | | | | | |
| College Work Study | \$60 | \$84 | \$94 | \$95 | \$123 | 0% | 1% | 1% | 1% | 1% | 63 | 105% |
| Need-based Loans | 1,768 | 1,316 | 1,504 | 1,748 | 2,101 | 14% | 10% | 11% | 12% | 13% | 333 | 19% |
| # | | | | | | | | | | | | |

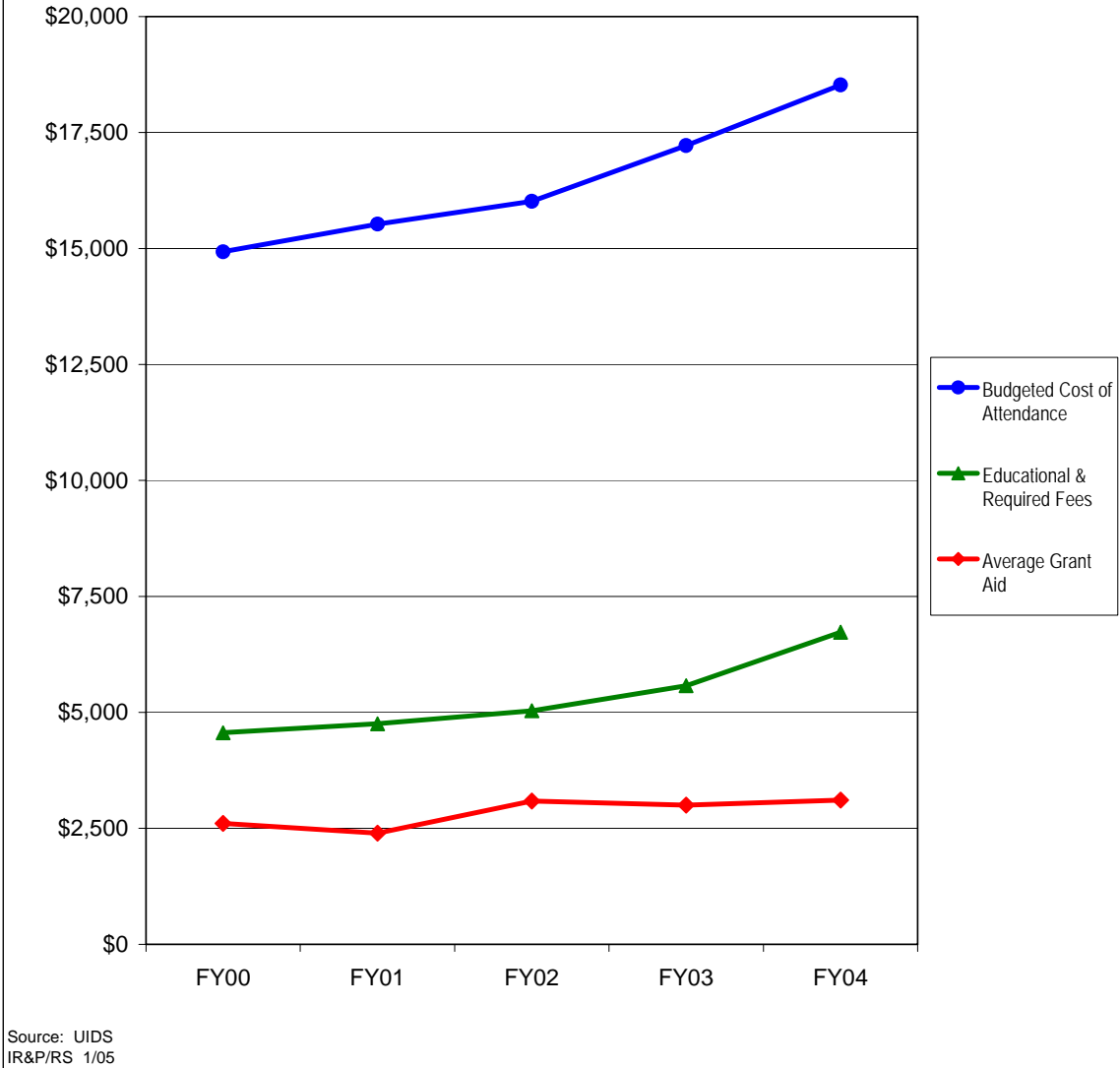


| | FY00 | FY01 | FY02 | FY03 | FY04 | 5-yr # Change | 5-yr % Change |
|--|--------------|--------------|--------------|--------------|--------------|------------------|------------------|
| Completed FAFSA, did not have a need | 290 | 242 | 273 | 273 | 294 | 4 | 1.4% |
| Grant aid, no FAFSA | <u>349</u> | <u>387</u> | <u>323</u> | <u>303</u> | <u>290</u> | <u>-59</u> | -16.9% |
| Aid recipients with no need | 639 | 629 | 596 | 576 | 584 | -55 | -8.6% |
| Aid recipients with need* | 1,456 | 1,538 | 1,780 | 2,056 | 2,234 | 778 | 53.4% |
| Full pay / No aid | 899 | 918 | 950 | 937 | 1,152 | 253 | 28.1% |
| Total of all full-time, Degree-Seeking MO UC | <u>2,994</u> | <u>3,085</u> | <u>3,326</u> | <u>3,569</u> | <u>3,970</u> | <u>976</u> | <u>32.6%</u> |

* All aid recipients with need completed a FAFSA and were not expected to pay the entire cost of attendance.

Note: Undergraduate Pharmacy and Medical students have been removed from this analysis.

Figure 3.2
Educational and Required Fees vs. 9-Month Cost of Attendance and Grant Aid
for Full-time Undergraduate Missouri Residents at the University of Missouri-
Kansas City, FY00 - FY04



| | FY00 | FY01 | FY02 | FY03 | FY04 | 5-yr # Change | 5-yr % Change |
|----------------------------|----------|----------|----------|----------|----------|------------------|------------------|
| Budgeted Cost of Attendanc | \$14,929 | \$15,527 | \$16,018 | \$17,219 | \$18,525 | \$3,596 | 24.1% |
| Educational & Required Fee | \$4,562 | \$4,753 | \$5,036 | \$5,573 | \$6,726 | \$2,164 | 47.4% |
| Average Grant Aid | \$2,606 | \$2,396 | \$3,086 | \$3,002 | \$3,108 | \$502 | 19.3% |

Note: Undergraduate Pharmacy and Medical students have been removed from this analysis.

Table 3.1**Average Institutional Grant Aid Distributed to Resident, Full-time, Degree-Seeking Undergraduates by Financial Need at the University of Missouri-Kansas City, FY00 - FY04**

| | FY00 | | FY01 | | FY02 | | FY03 | | FY04 | |
|--------------|-------|-------|-------|-------|-------|-------|-------|-------|-------|-------|
| | N | Mean | N | Mean | N | Mean | N | Mean | N | Mean |
| With Need | 1,456 | \$662 | 1,538 | \$742 | 1,780 | \$741 | 2,056 | \$818 | 2,234 | \$907 |
| Without Need | 581 | 1,507 | 629 | 1,546 | 596 | 1,537 | 576 | 1,561 | 584 | 1,692 |

Source: UIDS
IR&P/LCB 3/05

Table 3.2**Total Grant Aid as % of Educational and Required Fees by Income Level at the University of Missouri-Kansas City, FY00 & FY04**

| Income Level | FY00 | | FY04 | |
|-----------------------|-----------|-------------------------------|-----------|-------------------------------|
| | Grant Aid | % Educational & Required Fees | Grant Aid | % Educational & Required Fees |
| <\$20,000 | \$3,649 | 80% | \$4,856 | 72% |
| \$20,000 to \$40,00 | \$2,852 | 63% | \$4,357 | 65% |
| \$40,000 to \$60,000 | \$2,494 | 55% | \$3,365 | 50% |
| \$60,000 to \$80,000 | \$1,809 | 40% | \$2,675 | 40% |
| \$80,000 to \$100,000 | \$1,699 | 37% | \$1,957 | 29% |
| >\$100,000 | \$2,584 | 57% | \$2,033 | 30% |

Source: UIDS
IR&P/LCB 3/05

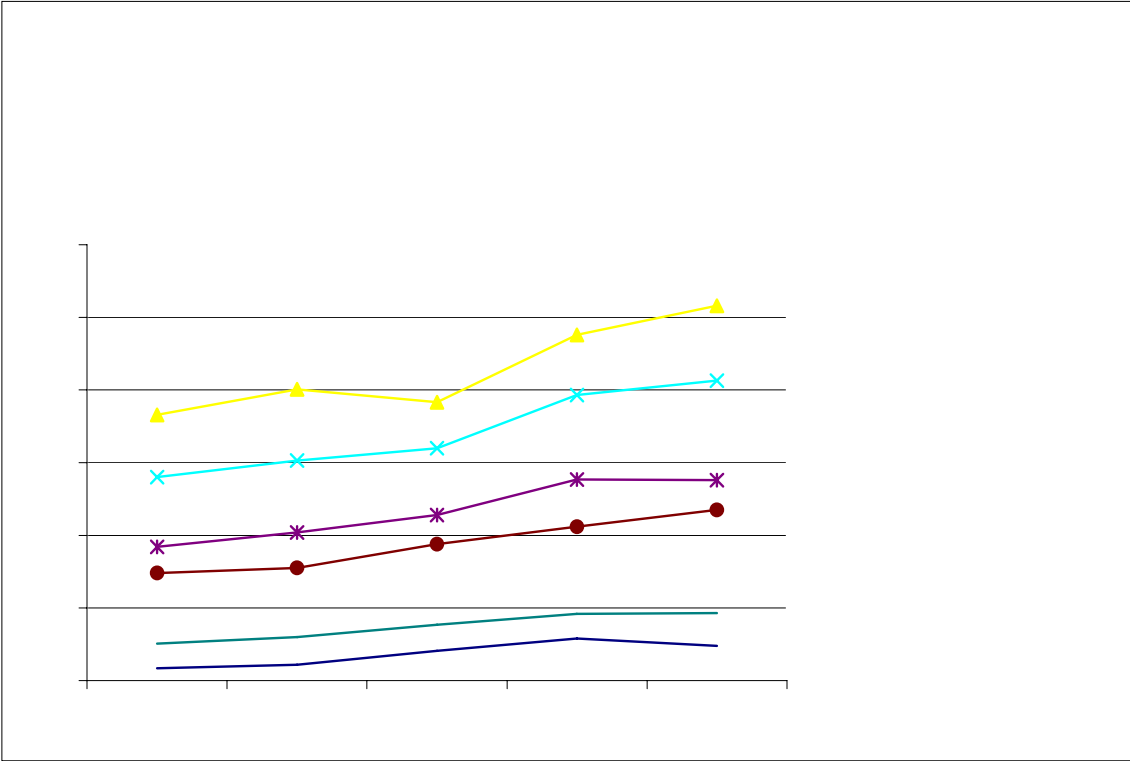


Figure 3.5
Average Amount of Unmet Financial Need by Income Level at
the UM-Kansas City, FY00 vs. FY04

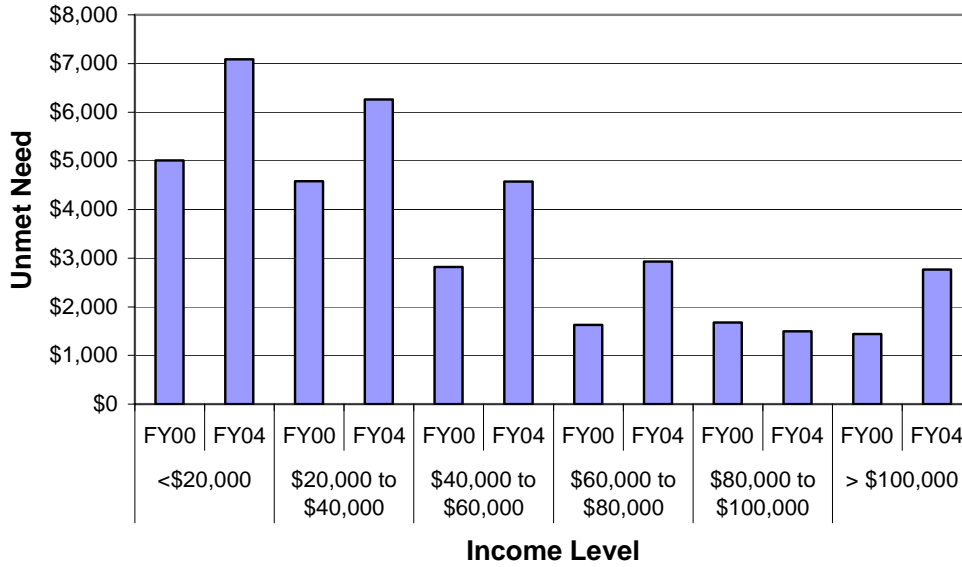


Table 3.3

| | FY00 | FY01 | FY02 | FY03 | FY04 | FY00 | FY01 | FY02 | FY03 | FY04 | # Change FY00-FY04 | % Change FY00-FY04 |
|---|--------------|--------------|--------------|--------------|--------------|------|------|------|------|------|-----------------------|-----------------------|
| Total Enrolled for 9 months (N) | 366 | 401 | 383 | 476 | 516 | | | | | | 150 | 41% |
| Cost of Attendance | \$15,733 | \$16,175 | \$16,707 | \$17,817 | \$19,156 | | | | | | \$3,423 | 22% |
| Less Expected Family Contribution* | <u>1,316</u> | <u>1,092</u> | <u>892</u> | <u>1,111</u> | <u>989</u> | 8% | 7% | 5% | 6% | 5% | -327 | -25% |
| Financial Need | 14,417 | 15,083 | 15,815 | 16,706 | 18,167 | 92% | 93% | 95% | 94% | 95% | 3,750 | 26% |
| Less Grant Aid | 3,649 | 4,135 | 5,162 | 4,895 | 4,856 | 23% | 26% | 31% | 27% | 25% | 1,207 | 33% |
| Unmet Need | \$10,768 | \$10,948 | \$10,653 | \$11,811 | \$13,311 | 68% | 68% | 64% | 66% | 69% | 2,543 | 24% |
| % Grant Aid that Met Financial Need | 25% | 27% | 33% | 29% | 27% | | | | | | | |
| Non-Grant Sources to Meet Remaining Unmet Financial Need | | | | | | | | | | | | |
| College Work Study | \$130 | \$167 | \$243 | \$196 | \$230 | 1% | 1% | 1% | 1% | 1% | 100 | 77% |
| Need-based Loans | 3,963 | 3,857 | 3,466 | 3,684 | 3,958 | 25% | 24% | 21% | 21% | 21% | -5 | 0% |
| Alternative Loans | 1,665 | 1,681 | 1,553 | 1,768 | 2,039 | 11% | 10% | 9% | 10% | 11% | 374 | 22% |
| Remaining Unmet Need | \$5,010 | \$5,243 | \$5,391 | \$6,163 | \$7,084 | 32% | 32% | 32% | 35% | 37% | 2,074 | 41% |
| *Amount Borrowed to meet EFC | \$755 | \$632 | \$544 | \$731 | \$698 | 5% | 4% | 3% | 4% | 4% | -57 | -8% |
| | FY00 | FY01 | FY02 | FY03 | FY04 | FY00 | FY01 | FY02 | FY03 | FY04 | # Change FY00-FY04 | % Change FY00-FY04 |
| Total Enrolled for 9 months (N) | 280 | 303 | 320 | 393 | 413 | | | | | | 133 | 48% |
| Cost of Attendance | \$15,107 | \$15,480 | \$15,939 | \$17,439 | \$18,549 | | | | | | \$3,442 | 23% |
| Less Expected Family Contribution* | <u>3,603</u> | <u>3,459</u> | <u>3,261</u> | <u>3,876</u> | <u>3,551</u> | 24% | 22% | 20% | 22% | 19% | -52 | -1% |
| Financial Need | 11,504 | 12,021 | 12,678 | 13,563 | 14,998 | 76% | 78% | 80% | 78% | 81% | 3,494 | 30% |
| Less Grant Aid | 2,852 | 3,133 | 4,218 | 3,743 | 4,357 | 19% | 20% | 26% | 21% | 23% | 1,505 | 53% |
| Unmet Need | \$8,652 | \$8,888 | \$8,460 | \$9,820 | \$10,641 | 57% | 57% | 53% | 56% | 57% | 1,989 | 23% |
| % Grant Aid that Met Financial Need | 25% | 26% | 33% | 28% | 29% | | | | | | | |
| Non-Grant Sources to Meet Remaining Unmet Financial Need | | | | | | | | | | | | |
| College Work Study | \$154 | \$281 | \$293 | \$315 | \$198 | 1% | 2% | 2% | 2% | 1% | 44 | 29% |
| Need-based Loans | 3,370 | 3,322 | 3,149 | 3,444 | 3,530 | 22% | 21% | 20% | 20% | 19% | 160 | 5% |
| Alternative Loans | 546 | 484 | 374 | 598 | 655 | 4% | 3% | 2% | 3% | 4% | 109 | 20% |
| Remaining Unmet Need | \$4,582 | \$4,801 | \$4,644 | \$5,463 | \$6,258 | 30% | 31% | 29% | 31% | 34% | 1,676 | 37% |
| *Amount Borrowed to meet EFC | \$1,254 | \$966 | \$1,030 | \$1,392 | \$1,350 | 8% | 6% | 6% | 8% | 7% | 96 | 8% |
| | FY00 | FY01 | FY02 | FY03 | FY04 | FY00 | FY01 | FY02 | FY03 | FY04 | # Change FY00-FY04 | % Change FY00-FY04 |
| Total Enrolled for 9 months (N) | 184 | 204 | 228 | 277 | 276 | | | | | | 92 | 50% |
| Cost of Attendance | \$14,324 | \$15,355 | \$15,847 | \$16,989 | \$18,055 | | | | | | \$3,731 | 26% |
| Less Expected Family Contribution* | <u>5,616</u> | <u>5,608</u> | <u>5,995</u> | <u>6,068</u> | <u>6,225</u> | 39% | 37% | 38% | 36% | 34% | 609 | 11% |
| Financial Need | 8,708 | 9,747 | 9,852 | 10,921 | 11,830 | 61% | 63% | 62% | 64% | 66% | 3,122 | 36% |

Table 3.3 (Continued)

| | FY00 | FY01 | FY02 | FY03 | FY04 | FY00 | FY01 | FY02 | FY03 | FY04 | # Change FY00-FY04 | % Change FY00-FY04 |
|---------------------------------|------|------|------|------|------|------|------|------|------|------|-----------------------|-----------------------|
| Total Enrolled for 9 months (N) | | | | | | | | | | | | |

Table 4.1**Average Institutional Grant Aid Distributed to Resident, Full-time, Degree-Seeking Undergraduates by Financial Need at the University of Missouri-Rolla, FY00 - FY04**

| | FY00 | | FY01 | | FY02 | | FY03 | | FY04 | |
|--------------|-------|---------|-------|---------|-------|---------|-------|---------|-------|---------|
| | N | Mean | N | Mean | N | Mean | N | Mean | N | Mean |
| With Need | 1,377 | \$1,408 | 1,304 | \$1,418 | 1,385 | \$1,421 | 1,501 | \$1,531 | 1,735 | \$1,583 |
| Without Need | 837 | 2,379 | 927 | 2,545 | 943 | 2,427 | 933 | 2,522 | 916 | 2,662 |

Source: UIDS
IR&P/LCB 3/05

Table 4.2**Total Grant Aid as % of Educational and Required Fees by Income Level at the University of Missouri-Rolla, FY00 & FY04**

| Income Level | FY00 | | FY04 | |
|-----------------------|--------------------------|------|--------------------------|------|
| | % Educational & Required | | % Educational & Required | |
| | Grant Aid | Fees | Grant Aid | Fees |
| <\$20,000 | \$4,234 | 91% | \$6,048 | 91% |
| \$20,000 to \$40,00 | \$4,553 | 98% | \$5,889 | 89% |
| \$40,000 to \$60,000 | \$3,672 | 79% | \$4,540 | 68% |
| \$60,000 to \$80,000 | \$3,099 | 66% | \$3,561 | 54% |
| \$80,000 to \$100,000 | \$3,292 | 71% | \$3,162 | 48% |
| >\$100,000 | \$3,526 | 76% | \$3,557 | 54% |

Source: UIDS
IR&P/LCB 3/05

Figure 4.3
Number of Full-time, Degree-Seeking 9-Month Undergraduate
Missouri Residents with Financial Need by Income Level at the
University of Missouri-Rolla, FY00 - FY04

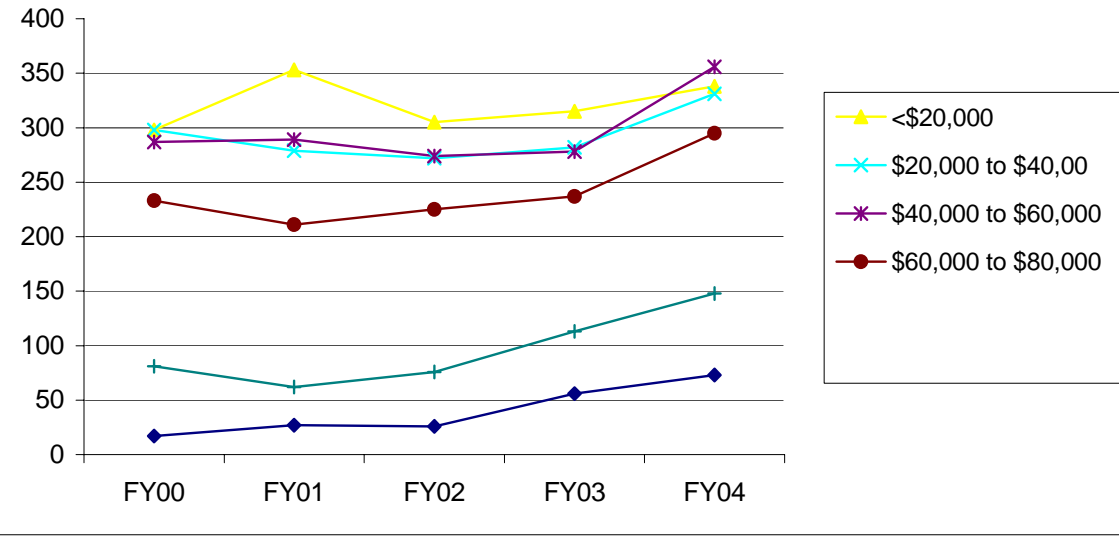
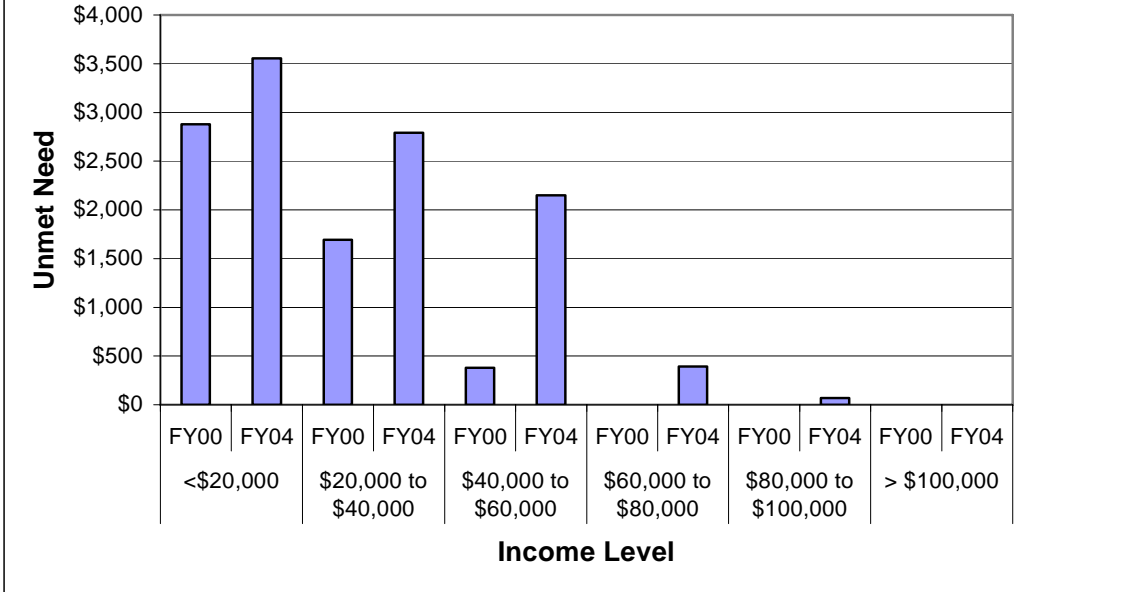


Figure 4.5
Average Amount of Unmet Financial Need by Income Level at
the UM-Rolla, FY00 vs. FY04



Source: UIDS
 IR&P/LCB 3/05

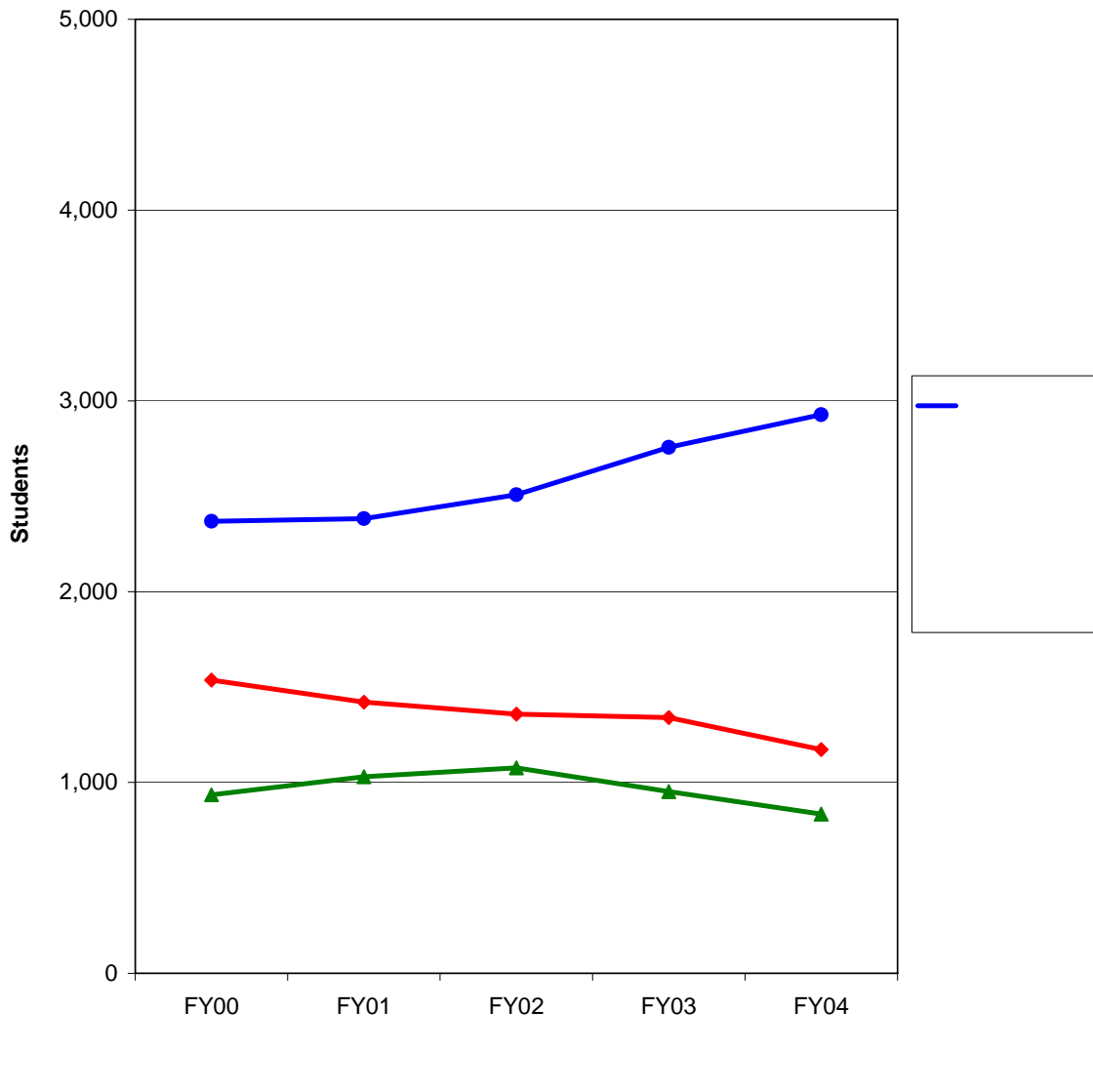
Table 4.3

| | FY00 | FY01 | FY02 | FY03 | FY04 | FY00 | FY01 | FY02 | FY03 | FY04 | # Change FY00-FY04 | % Change FY00-FY04 |
|---|--------------|------------|------------|------------|------------|------|------|------|------|------|-----------------------|-----------------------|
| Total Enrolled for 9 months (N) | 298 | 353 | 305 | 315 | 338 | | | | | | 40 | 13% |
| Cost of Attendance | \$12,633 | \$13,517 | \$13,487 | \$14,584 | \$15,756 | | | | | | \$3,123 | 25% |
| Less Expected Family Contribution* | <u>1,115</u> | <u>811</u> | <u>933</u> | <u>875</u> | <u>782</u> | 9% | 6% | 7% | 6% | 5% | -333 | -30% |
| Financial Need | 11,518 | 12,554 | 12,554 | 13,709 | 14,974 | 91% | 93% | 93% | 94% | 95% | 3,456 | 30% |
| Less Grant Aid | 4,234 | 4,883 | 5,087 | 5,467 | 6,048 | 34% | 36% | 38% | 37% | 38% | 1,814 | 43% |
| Unmet Need | \$7,284 | \$7,823 | \$7,467 | \$8,242 | \$8,926 | 58% | 58% | 55% | 57% | 57% | 1,642 | 23% |
| % Grant Aid that Met Financial Need | 37% | 39% | 41% | 40% | 40% | | | | | | | |
| Non-Grant Sources to Meet Remaining Unmet Financial Need | | | | | | | | | | | | |
| College Work Study | \$234 | \$188 | \$181 | \$205 | \$203 | 2% | 1% | 1% | 1% | 1% | -31 | -13% |
| Need-based Loans | 3,500 | 4,028 | 3,610 | 3,611 | 4,036 | 28% | 30% | 27% | 25% | 26% | 536 | 15% |
| Alternative Loans | 669 | 796 | 796 | 973 | 1,130 | 5% | 6% | 6% | 7% | 7% | 461 | 69% |
| Remaining Unmet Need | \$2,881 | \$2,811 | \$2,880 | \$3,453 | \$3,557 | 23% | 21% | 21% | 24% | 23% | 676 | 23% |
| *Amount Borrowed to meet EFC | \$472 | \$420 | \$442 | \$371 | \$378 | 4% | 3% | 3% | 3% | 2% | -94 | -20% |
| | | | | | | | | | | | # Change FY00-FY04 | % Change FY00-FY04 |
| Total Enrolled for 9 months (N) | 298 | 279 | 272 | 282 | 331 | | | | | | 33 | 11% |
| Cost of Attendance | \$12,286 | \$12,786 | \$13,315 | \$14,033 | \$15,397 | | | | | | \$3,111 | 25% |

Table 4.3 (Continued)

| FY00 | FY01 | FY02 | FY03 | FY04 | FY00 | FY01 | FY02 | FY03 | FY04 | # Change FY00-FY04 | % |
|------|------|------|------|------|------|------|------|------|------|-----------------------|---|
|------|------|------|------|------|------|------|------|------|------|-----------------------|---|

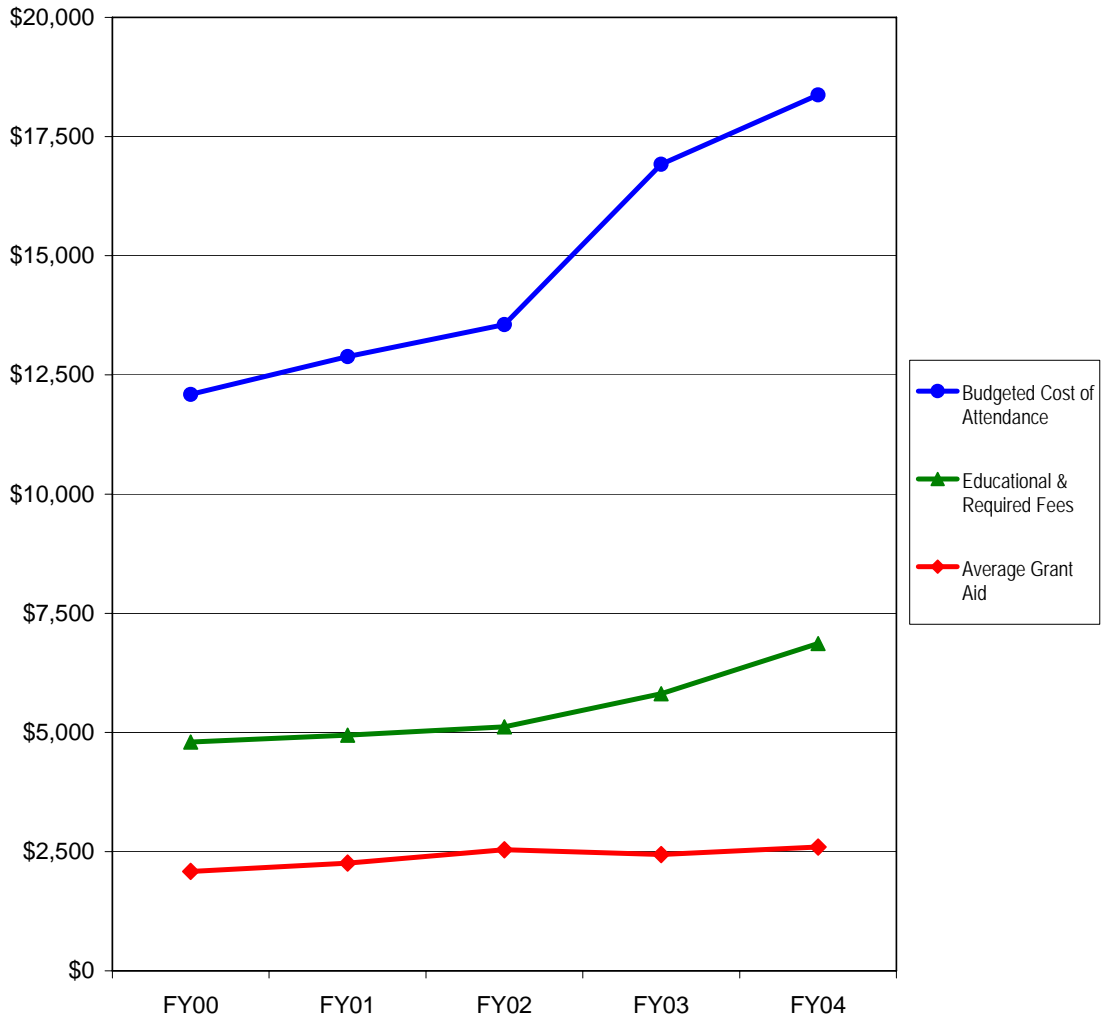
Figure 5.1
Distribution of Financial Aid for Full-time, Degree-Seeking Undergraduate Missouri Residents at the University of Missouri-St. Louis, FY00 - FY04



| | FY00 | FY01 | FY02 | FY03 | FY04 | 5-yr # Change | 5-yr % Change |
|---|--------------|--------------|--------------|--------------|--------------|---------------|---------------|
| Completed FAFSA, did not have a need | 570 | 582 | 622 | 530 | 470 | -100 | -17.5% |
| Grant aid, no FAFSA | <u>366</u> | <u>448</u> | <u>455</u> | <u>423</u> | <u>365</u> | <u>-1</u> | -0.3% |
| Aid recipients with no need | 936 | 1,030 | 1,077 | 953 | 835 | -101 | -10.8% |
| Aid recipients with need* | 2,369 | 2,383 | 2,508 | 2,757 | 2,928 | 559 | 23.6% |
| Full pay / No aid | 1,537 | 1,421 | 1,358 | 1,340 | 1,173 | -364 | -23.7% |
| Total of all full-time, Degree-Seeking MO UC | 4,842 | 4,834 | 4,943 | 5,050 | 4,936 | 94 | 1.9% |

* All aid recipients with need completed a FAFSA and were not expected to pay the entire cost of attendance.

Figure 5.2
Educational and Required Fees vs. 9-Month Cost of Attendance and Grant Aid
for Full-time Undergraduate Missouri Residents at the University of Missouri-
St. Louis, FY00 - FY04



| | FY00 | FY01 | FY02 | FY03 | FY04 | 5-yr # Change | 5-yr % Change |
|----------------------------|----------|----------|----------|----------|----------|------------------|------------------|
| Budgeted Cost of Attendanc | \$12,090 | \$12,887 | \$13,556 | \$16,918 | \$18,375 | \$6,285 | 52.0% |
| Educational & Required Fee | \$4,796 | \$4,940 | \$5,116 | \$5,813 | \$6,866 | \$2,070 | 43.2% |
| Average Grant Aid | \$2,083 | \$2,260 | \$2,538 | \$2,437 | \$2,595 | \$512 | 24.6% |

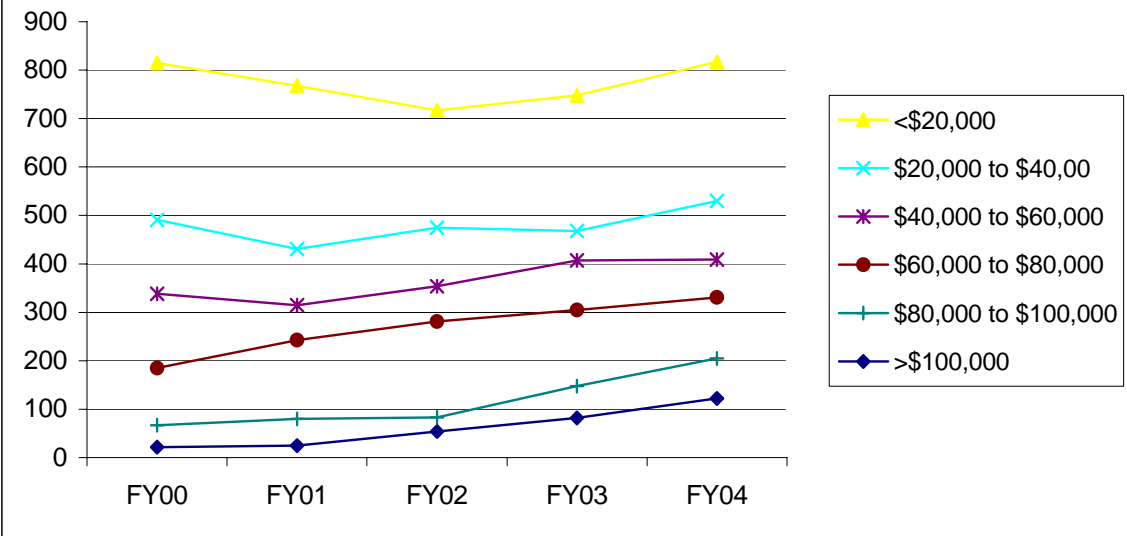
Table 5.1

Average Institutional Grant Aid Distributed to Resident, Full-time, Degree-Seeking

| | N | FY00 Mean | N | FY01 Mean | N | FY02 Mean | N | FY03 Mean | N | FY04 Mean |
|--------------|----------|----------------------|----------|----------------------|----------|----------------------|----------|----------------------|----------|----------------------|
| With Need | 2,369 | \$478 | 2,383 | \$524 | 2,508 | \$516 | 2,757 | \$437 | 2,928 | \$504 |
| Without Need | 936 | 1,161 | 1,030 | 1,190 | 1,077 | 1,105 | 953 | 1,022 | 835 | 993 |

Source: UIDS
IR&P/LCB 3/05

Figure 5.3
Number of Full-time, Degree-Seeking 9-Month Undergraduate
Missouri Residents with Financial Need by Income Level at the
University of Missouri-St. Louis, FY00 - FY04



Source: UIDS
 IR&P/LCB 3/05
 Fd/Cs561s 2q\$20,000

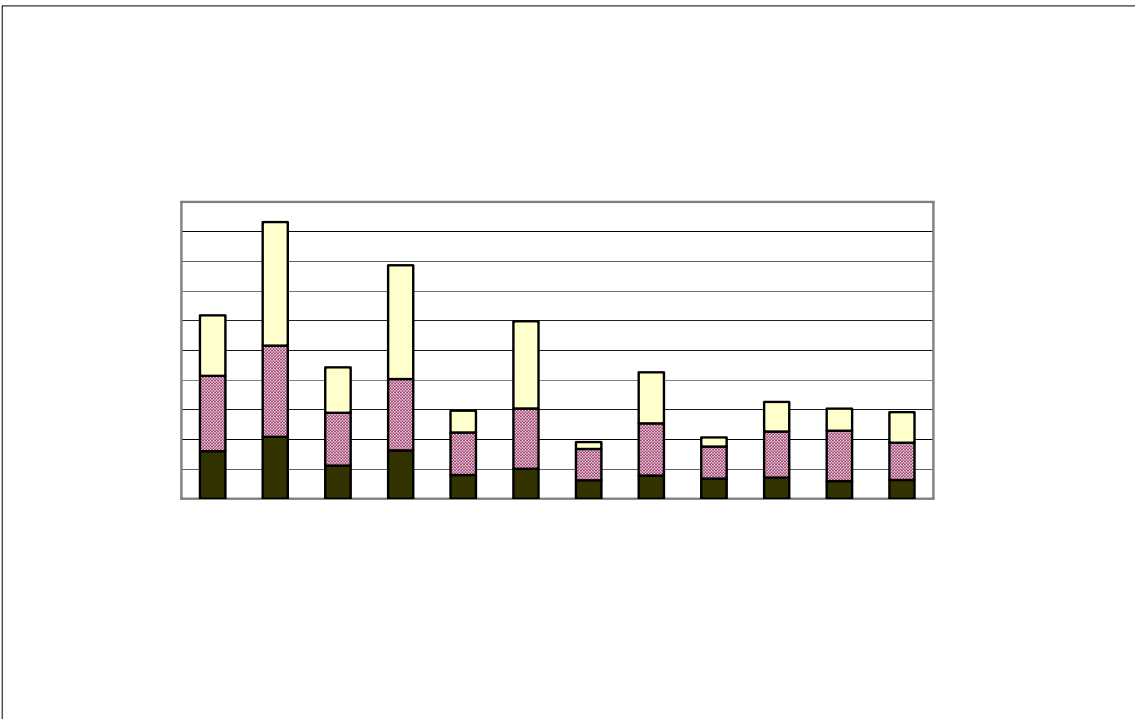
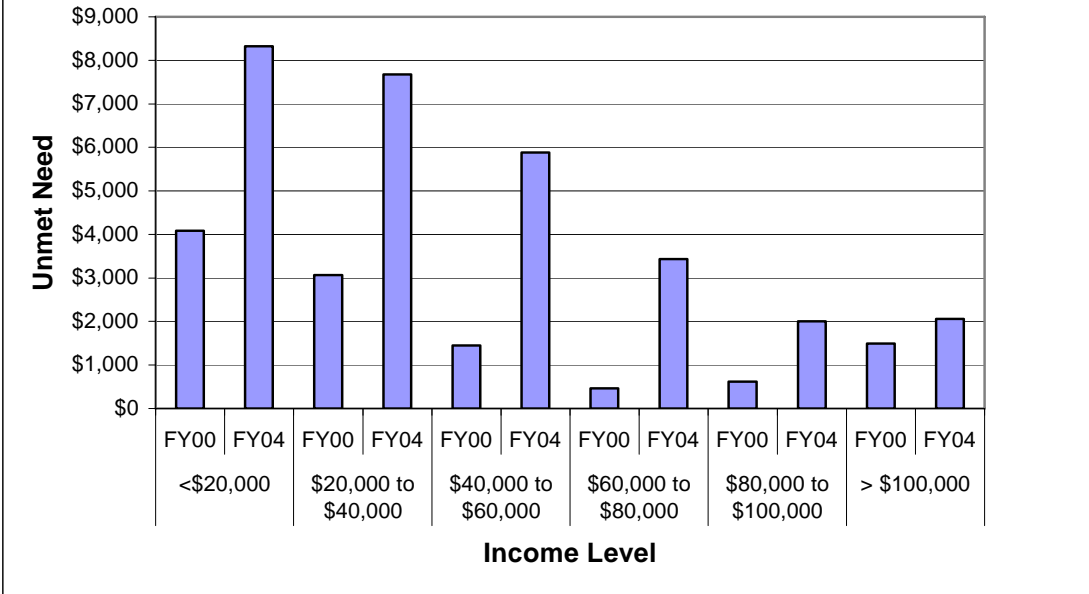


Figure 5.5
Average Amount of Unmet Financial Need by Income Level at
the UM-St. Louis, FY00 vs. FY04



Source: UIDS
 IR&P/LCB 3/05

Table 5.3

| | FY00 | FY01 | FY02 | FY03 | FY04 | FY00 | FY01 | FY02 | FY03 | FY04 | # Change FY00-FY04 | % Change FY00-FY04 |
|---|--------------|--------------|--------------|--------------|--------------|------|------|------|------|------|-----------------------|-----------------------|
| Total Enrolled for 9 months (N) | 815 | 768 | 717 | 748 | 817 | | | | | | 2 | 0% |
| Cost of Attendance | \$13,606 | \$14,088 | \$14,666 | \$18,489 | \$19,774 | | | | | | \$6,168 | 45% |
| Less Expected Family Contribution* | <u>1,245</u> | <u>1,125</u> | <u>1,088</u> | <u>1,075</u> | <u>1,140</u> | 9% | 8% | 7% | 6% | 6% | -105 | -8% |
| Financial Need | 12,361 | 12,963 | 13,578 | 17,414 | 18,634 | 91% | 92% | 93% | 94% | 94% | 6,273 | 51% |
| Less Grant Aid | 3,198 | 3,481 | 4,130 | 4,094 | 4,162 | 24% | 25% | 28% | 22% | 21% | 964 | 30% |
| Unmet Need | \$9,163 | \$9,482 | \$9,448 | \$13,320 | \$14,472 | 67% | 67% | 64% | 72% | 73% | 5,309 | 58% |
| % Grant Aid that Met Financial Need | 26% | 27% | 30% | 24% | 22% | | | | | | | |
| Non-Grant Sources to Meet Remaining Unmet Financial Need | | | | | | | | | | | | |
| College Work Study | \$98 | \$62 | \$104 | \$126 | \$106 | 1% | 0% | 1% | 1% | 1% | 8 | 8% |
| Need-based Loans | 3,649 | 3,601 | 3,639 | 3,736 | 3,847 | 27% | 26% | 25% | 20% | 19% | 198 | 5% |
| Alternative Loans | 1,332 | 1,568 | 1,410 | 1,851 | 2,197 | 10% | 11% | 10% | 10% | 11% | 865 | 65% |
| Remaining Unmet Need | \$4,084 | \$4,251 | \$4,295 | \$7,607 | \$8,322 | 30% | 30% | 29% | 41% | 42% | 4,238 | 104% |
| *Amount Borrowed to meet EFC | \$657 | \$671 | \$628 | \$671 | \$738 | 5% | 5% | 4% | 4% | 4% | 81 | 12% |

| | FY00 | FY01 | FY02 | FY03 | FY04 | FY00 | FY01 | FY02 | FY03 | FY04 | # Change FY00-FY04 | % Change FY00-FY04 |
|---|--------------|--------------|--------------|--------------|--------------|------|------|------|------|------|-----------------------|-----------------------|
| Total Enrolled for 9 months (N) | 491 | 431 | 475 | 468 | 530 | | | | | | 39 | 8% |
| Cost of Attendance | \$12,078 | \$12,883 | \$13,838 | \$17,403 | \$18,924 | | | | | | \$6,846 | 57% |
| Less Expected Family Contribution* | <u>3,221</u> | <u>3,170</u> | <u>3,336</u> | <u>3,461</u> | <u>3,191</u> | 27% | 25% | 24% | 20% | 17% | -30 | -1% |
| Financial Need | 8,857 | 9,713 | 10,502 | 13,942 | 15,733 | 73% | 75% | 76% | 80% | 83% | 6,876 | 78% |
| Less Grant Aid | 2,242 | 2,539 | 3,144 | 3,053 | 3,254 | 19% | 20% | 23% | 18% | 17% | 1,012 | 45% |
| Unmet Need | \$6,615 | \$7,174 | \$7,358 | \$10,889 | \$12,479 | 55% | 56% | 53% | 63% | 66% | 5,864 | 89% |
| % Grant Aid that Met Financial Need | 25% | 26% | 30% | 22% | 21% | | | | | | | |
| Non-Grant Sources to Meet Remaining Unmet Financial Need | | | | | | | | | | | | |
| College Work Study | \$60 | \$30 | \$76 | \$182 | \$99 | 0% | 0% | 1% | 1% | 1% | 39 | 65% |
| Need-based Loans | 3,174 | 3,376 | 3,169 | 3,563 | 3,659 | 26% | 26% | 23% | 20% | 19% | 485 | 15% |
| Alternative Loans | 310 | 414 | 501 | 499 | 1,046 | 3% | 3% | 4% | 3% | 6% | 736 | 237% |
| Remaining Unmet Need | \$3,071 | \$3,354 | \$3,612 | \$6,645 | \$7,675 | 25% | 26% | 26% | 38% | 41% | 4,604 | 150% |

*Amount Borrowed to mee-23458y061(\$37(F(c)01(3(o666-79(%)-22904(\$)-959(18)-9986)02(0)1(\$)-99(18066(01)-10(0)9)-1734571(\$7,9(18)-99(01)-10(4)-23411(\$7,9(9(01)-10(2)-2345734589(3%))

o

Table 5.3 (Continued)

| | FY00 | FY01 | FY02 | FY03 | FY04 | FY00 | FY01 | FY02 | FY03 | FY04 | # Change FY00-FY04 | % Change FY00-FY04 |
|--|----------|----------|----------|----------|----------|------|------|------|------|------|-----------------------|-----------------------|
| Total Enrolled for 9 months (N) | 185 | 243 | 281 | 305 | 331 | | | | | | 146 | 79% |
| Cost of Attendance | \$11,123 | \$12,512 | \$13,540 | \$16,213 | \$17,438 | | | | | | \$6,315 | 57% |