

**University of Missouri System  
Undergraduate Financial Aid Summary Report  
FY2008-FY2012**

**(Missouri Resident Undergraduate Students)**

Report Prepared by  
Dr. La Shonda Carter-Boone  
Senior Institutional Research Analyst

Office of Institutional Research and Planning  
714 Lewis Hall  
University of Missouri System

November 2012

IR&P 2012, Report 3

[Boonel@umsystem.edu](mailto:Boonel@umsystem.edu)  
573-884-3104

**University of Missouri System**  
**Undergraduate Financial Aid Summary Report**  
**FY2008-FY2012**  
**(Missouri Resident Undergraduates)**

**Executive Summary**

The *Undergraduate Financial Aid Summary Report* includes undergraduate financial aid distribution patterns for the University of Missouri System and the four campuses from fiscal year 2007-08 (FY08) through fiscal year 2011-12 (FY12). In the first part of this report nine questions are addressed at the UM System level:

1. How many students received aid and what type of aid was received?
2. Has grant aid kept pace with increases in tuition and required fees?
3. How has the distribution of institutional gift aid changed over the past five years?
4. How has the distribution of PLUS loans changed over the past five years?
5. What percent of tuition and required fees is met by grant aid?
6. How has the number of aid recipients with need changed by income level?
7. How do financial aid packages vary by income level?
8. For students that have need, what is the average amount of unmet financial need?
9. Can families afford to pay the expected family contribution?

The second part of the report provides campus-

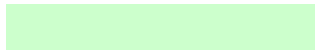
- The number of institutional grants awarded based on need declined from 4,301 in FY08 to 4,180 in FY12. During the same time period there has been a substantial increase in the number of merit awards given to students both with and without need

## The contextual basis of financial aid distribution

Less than 20% of undergraduates attending the University of Missouri pay the entire cost of attendance out-of-pocket. The majority of students receive some type of financial assistance to attend the University in the form of grants, scholarships, work study or loans. In addition, financial assistance comes from a wide variety of sources including the state and federal governments, profit and non-profit organizations, and the University (institutional gift aid). In addition, a significant amount of financial aid that is distributed is based on financial need (i.e. it is documented that the student's family cannot afford the entire cost of attendance). A student must complete a Free Application for Federal Student Aid (FAFSA) in order to determine the extent of financial need and the type and amount of aid based on need that can be awarded.

Many of the tables and figures throughout this report reference terms such as budgeted cost of attendance, financial need, grant aid, and unmet need. Assuming that a student has completed a FAFSA, Figure A.1 is provided to give an overview of how a student's financial aid package is determined.

\$23,455 Budgeted Cost of Attendance includes tuition & required fees, books, and living expenses



Foremost, a BUDGETED COST OF ATTENDANCE (COA) is determined for every

## Section I

### System-wide Financial Aid Trends of Full-Time, Degree-Seeking Missouri Undergraduates from FY08 to FY12

**PLEASE NOTE:** The findings below highlight system-wide trends at the University of Missouri. Financial aid trends may differ by campus and are included in the second part of this report.

#### **1. How many students received aid and what type of aid was received?**

The total number of full-time, degree-seeking resident undergraduates steadily increased over the past five years from 29,587 to 32,904, an increase of over 10%. With this increase in enrollment, there has been an 30.8% increase in the number of students with financial need from 14,326 in FY08 to 18,734 in FY12 (Figure 1.1).

#### **2. Has grant aid kept pace with increases in tuition and required fees?**

Over the past five years tuition and required fees increased 11.2% and the budgeted cost of attendance increased 16.3% while average grant aid increased 5.6%. The overall trend is that there is an increasing gap between tuition and required fees and the average grant aid awarded to undergraduates (Figure 1.2).

#### **3. How has the distribution of institutional gift aid changed over the past five years?**

While there was a decline in the overall number of students with need that received institutional grant aid, the average institutional grant award increased nearly \$488 over the past five years. In addition, there has been a dramatic shift in the type of institutional gift aid awarded to students with need. In FY08 nearly 48% of all institutional grant aid awarded to students with need was awarded based on merit and 41% was awarded based on need. By FY12 only 35% of all institutional grant aid awarded to students with need was based on need and 59% was based on merit (Table 1.1).

#### **4. How has the distribution of PLUS loans changed over the past five years?**

The volume of Parent Loans for Undergraduate Students (PLUS loans) increased from FY08 to FY12 for both students with and without financial need. In FY08 3,426 parents borrowed on average \$9,613 to meet their child's education expenses. Five years later, nearly 4,200 parents borrowed approximately \$10,473 to cover these expenses. System-wide, the total amount of PLUS loans distributed increased from \$32.9 million in FY08 to \$43.9 million in FY12 (Table 1.4).

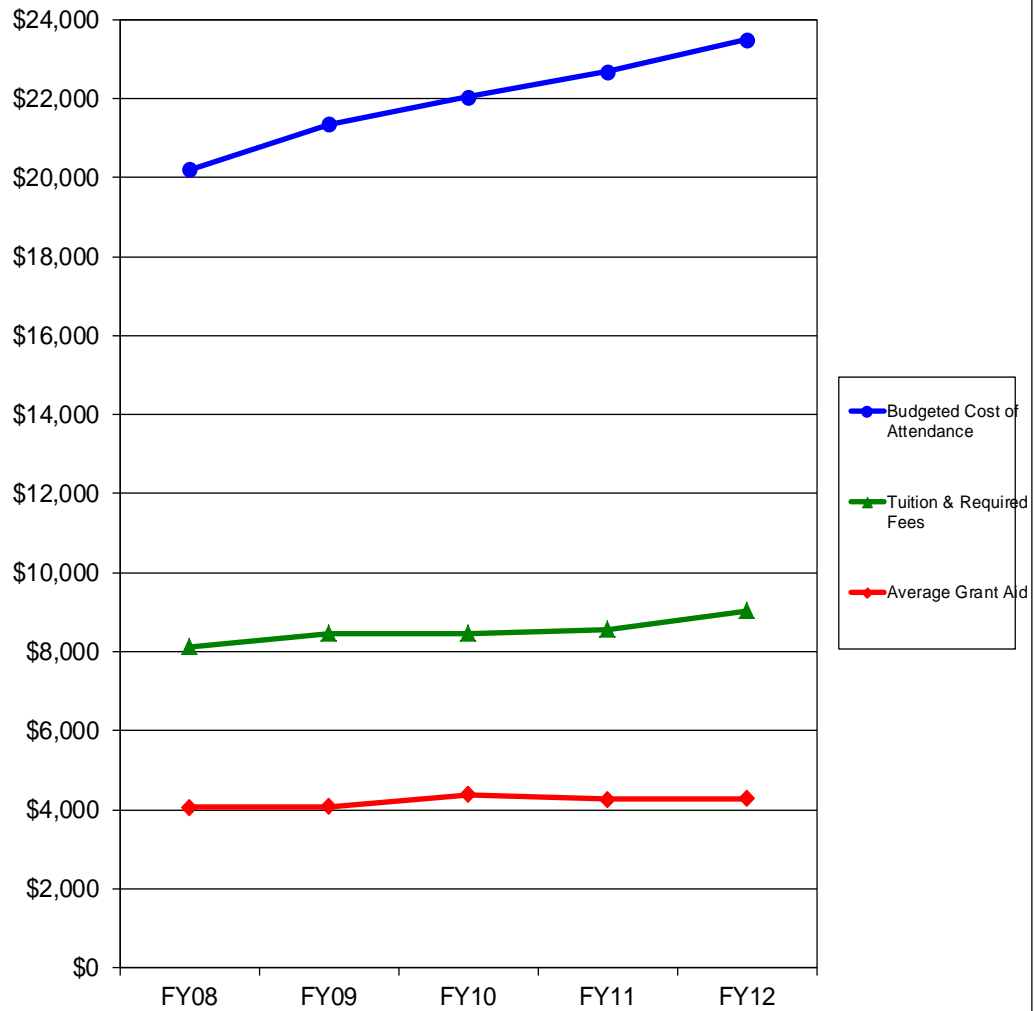
**5. What percent of tuition and required fees is met by grant aid?**

Lower income students have the most financial need and on average receive much more grant aid than higher income students. In FY08, grant aid covered nearly 81% of tuition and required fees for students with income less than \$20,000 and 76% for students with income between \$20,000 and \$40,000. By FY12, grant aid covered 74% of tuition and required fees for students with income less than \$20,000 and 76% for students with income between \$20,000 and \$40,000. Grant aid continues to cover a smaller percentage of the tuition a

FY08	FY09	FY10	FY11	FY12	5-yr # Change	5-yr % Change
------	------	------	------	------	------------------	------------------



Figure 1.2  
 Tuition and Required Fees vs. 9 -Month Cost of Attendance and Grant Aid for  
 Full-time Undergraduate Missouri Residents at the University of Missouri  
 System, FY08 - FY12



	FY08	FY09	FY10	FY11	FY12	5-yr # Change	5-yr % Change
Budgeted Cost of Attendance	\$20,210	\$21,354	\$22,039	\$22,682	\$23,501	\$3,291	16.3%
Tuition & Required Fees	\$8,123	\$8,456	\$8,464	\$8,566	\$9,035	\$913	11.2%
Average Grant Aid	\$4,059	\$4,078	\$4,383	\$4,272	\$4,287	\$228	5.6%

Note: Undergraduate Pharmacy and Medical students have been removed from this analysis.  
 Source: UIDS, IPEDS Institutional Characteristics, PeopleSoft  
 IR&P/LCB 11/12

Table 1.1

Average Institutional Grant Awards Distributed to Resident, Full-time, Degree-Seeking Undergraduates at the University of Missouri System, FY08 - FY12

Students with Need	FY08		FY09		FY10		FY11		FY12	
	# of Awards	Average Award	# of Awards	Average Award	# of Awards	Average Award	# of Awards	Average Award	# of Awards	Average Award
Type of Award Need*	4,301	\$2,045	3,969	\$2,493	3,742	\$1,999	3,173	\$2,290	4,180	\$2,482
Merit	5,073	\$2,790	5,651	\$2,909	6,080	\$3,191	6,667	\$3,086	7,092	\$3,210
Other**	1,099	\$2,268	641	\$2,145	716	\$2,341	748	\$2,207	729	\$2,568
<b>Total</b>	<b>10,473</b>	<b>\$2,429</b>	<b>10,261</b>	<b>\$2,700</b>	<b>10,538</b>	<b>\$2,710</b>	<b>10,588</b>	<b>\$2,785</b>	<b>12,001</b>	<b>\$2,917</b>

Students without Need	FY08		FY09		FY10		FY11		FY12	
	# of Awards	Average Award	# of Awards	Average Award	# of Awards	Average Award	# of Awards	Average Award	# of Awards	Average Award
Type of Award Merit	4,603	\$3,015	5,337	\$3,101	5,095	\$3,138	4,969	\$3,133	5,073	\$3,153
Other**	941	\$2,476	625	\$2,104	533	\$2,396	476	\$2,412	457	\$2,519
<b>Total</b>	<b>5,544</b>	<b>\$2,924</b>	<b>5,962</b>	<b>\$2,997</b>	<b>5,628</b>	<b>\$3,068</b>	<b>5,445</b>	<b>\$3,070</b>	<b>5,530</b>	<b>\$3,101</b>

\*Institutional grant aid awarded to students with need includes both need and merit-based aid.

\*\*Includes athletic aid and tuition waivers.

Source: UIDS, PeopleSoft

IR&P/LCB 11/12

Table 1.2

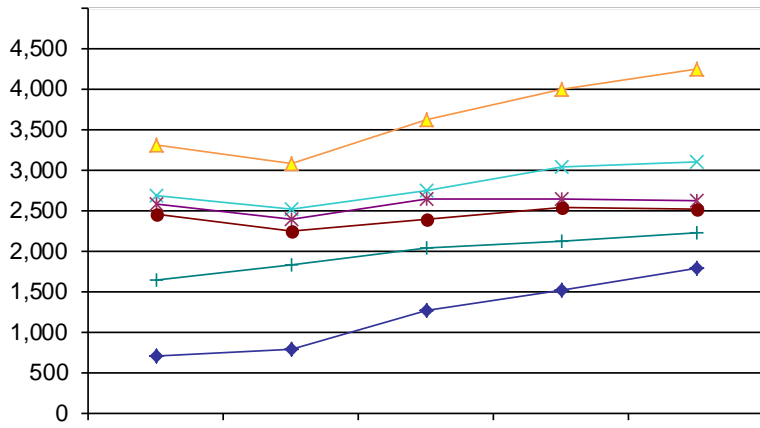
In.607

92.12

Table 1.3

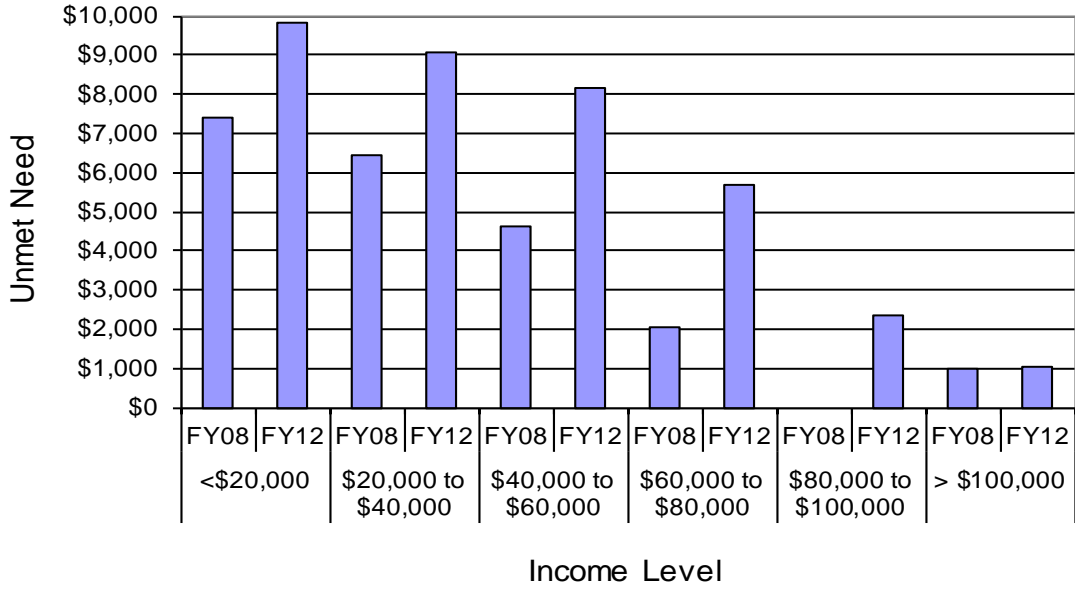
Income Level	Expected				% Unmet	Expected				% Unmet
	Family Contribution	Gift Aid	Work Study	Loans		Family Contribution	Gift Aid	Work Study	Loans	
<\$20,000	3%	31%	1%	30%	35%	2%	27%	1%	31%	39%
\$20,000 to \$40,00	14%	30%	1%	25%	30%	7%	29%	1%	26%	37%
\$40,000 to \$60,000	29%	24%	1%	23%	23%	20%	22%	1%	22%	35%
\$60,000 to \$80,000	52%	18%	1%	19%	10%	40%	16%	0%	20%	24%
\$80,000 to \$100,000	72%	14%	0%	14%	0%	61%	12%	0%	16%	11%
>\$100,000	67%	11%	0%	17%	5%	72%	10%	0%	13%	5%

Source: UIDS, PeopleSoft  
IR&P/LCB 11/12



Source: UIDS, PeopleSoft  
IR&P/LCB 11/12

**Figure 1.5**  
**Average Amount of Unmet Financial Need by Income Level**  
**at the University of Missouri System, FY08 vs. FY12**



Source: UIDS, PeopleSoft  
 IR&P/LCB 11/12

Table 1.5

	FY08	FY09	FY10	FY11	FY12	FY08	FY09	FY10	FY11	FY12	# Change FY08-FY12	% Change FY08-FY12
Total Enrolled for 9 months (N)	3,301	3,071	3,609	3,995	4,231						930	28%
Cost of Attendance	\$21,325	\$22,395	\$23,125	\$23,996	\$24,619						\$3,295	15%
Less Expected Family Contribution*	<u>734</u>	<u>813</u>	<u>588</u>	<u>506</u>	<u>385</u>	3%	4%	3%	2%	2%	-348	-47%
Financial Need	20,591	21,582	22,537	23,490	24,234	97%	96%	97%	98%	98%	3,643	18%
Less Grant Aid	6,573	6,586	7,075	6,854	6,726	31%	29%	31%	29%	27%	153	2%
Unmet Need	\$14,018	\$14,996	\$15,462	\$16,636	\$17,508	66%	67%	67%	69%	71%	3,490	25%
% Grant Aid that Met Financial Need	32%	31%	31%	29%	28%							
Non-Grant Sources to Meet												

Table 1.5 (Continued)

	FY08	FY09	FY10	FY11	FY12	FY08	FY09	FY10	FY11	FY12	# Change FY08-FY12	% Change FY08-FY12
Total Enrolled for 9 months (N)												

## **Section II**

### **Campus-Level Financial Aid Trends of Full-Time, Degree-Seeking Missouri Undergraduates from FY08 to FY12**

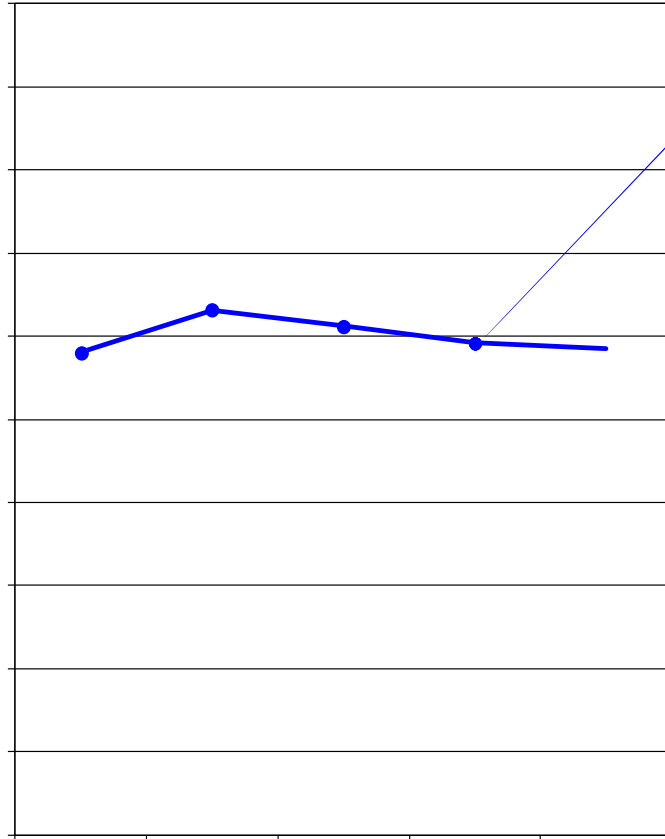
**UM-Columbia (Table and Figure 2 series)**

**UM-Kansas City (Table and Figure 3 series)**

**Missouri S&T (Table and Figure 4 series)**

**UM-St. Louis (Table and Figure 5 series)**





	FY08	FY09	FY10	FY11	FY12	5-yr # Change	5-yr % Change
Completed FAFSA, did not have a need	3,570	4,034	4,222	4,101	4,110	540	15.1%
Grant aid, no FAFSA	<u>2,232</u>	<u>2,284</u>	<u>1,898</u>	<u>1,819</u>	<u>1,741</u>	<u>-491</u>	<u>-22.0%</u>
Aid recipients with no need	5,802	6,318	6,120	5,920	5,851	49	0.8%
Aid recipients with need*	6,844	7,348	8,044	8,601	9,071	2,227	32.5%
Full pay / No aid	<u>4,561</u>	<u>4,380</u>	<u>4,229</u>	<u>4,291</u>	<u>4,315</u>	<u>-246</u>	<u>-5.4%</u>
Total of all full- time, Degree-Seeking MO UG	7,207	18,046	18,393	18,812	19,237	2,030	11.8%

\* All aid recipients with need completed a FAFSA and were not expected to pay the entire cost of attendance.

Source: UIDS, EMSAS, and PeopleSoft  
IR&P/LCB 11/12


	FY08	FY09	FY10	FY11	FY12	5-yr # Change	5-yr % Change
Budgeted Cost of Attendance	\$19,347	\$20,683	\$20,848	\$21,398	\$22,341	\$2,994	15.5%
Tuition & Required Fees	\$8,098	\$8,467	\$8,501	\$8,501	\$8,989	\$891	11.0%
Average Grant Aid	\$3,945	\$3,920	\$4,053	\$3,953	\$4,028	\$83	2.1%

Source: UIDS, IPEDS Institutional Characteristics, PeopleSoft  
IR&P/LCB 11/12

Table 2.1

Students with Need

Type of Award	# of Awards	Average Award	# of Awards	Average Award	# of Awards	Average Award	# of Awards	Average Award	# of Awards	Average Award
Need*	3,310	\$2,023	2,991	\$2,640	3,134	\$2,035	2,558	\$2,427	3,189	\$2,762
Merit	2,311	\$2,790	2,490	\$2,805	2,673	\$2,955	2,901	\$2,892	3,094	\$2,877
Other**	181	\$1,390	234	\$1,403	322	\$1,907	276	\$1,859	288	\$2,038
Total	5,802	\$2,309	5,715	\$2,661	6,129	\$2,430	5,735	\$2,635	6,571	\$2,784

Students without Need

Type of Award	# of Awards	Average Award	# of Awards	Average Award	# of Awards	Average Award	# of Awards	Average Award	# of Awards	Average Award
Merit	3,024	\$2,717	3,351	\$2,812	3,495	\$2,962	3,457	\$2,816	3,890	\$3,180

Table 2.3

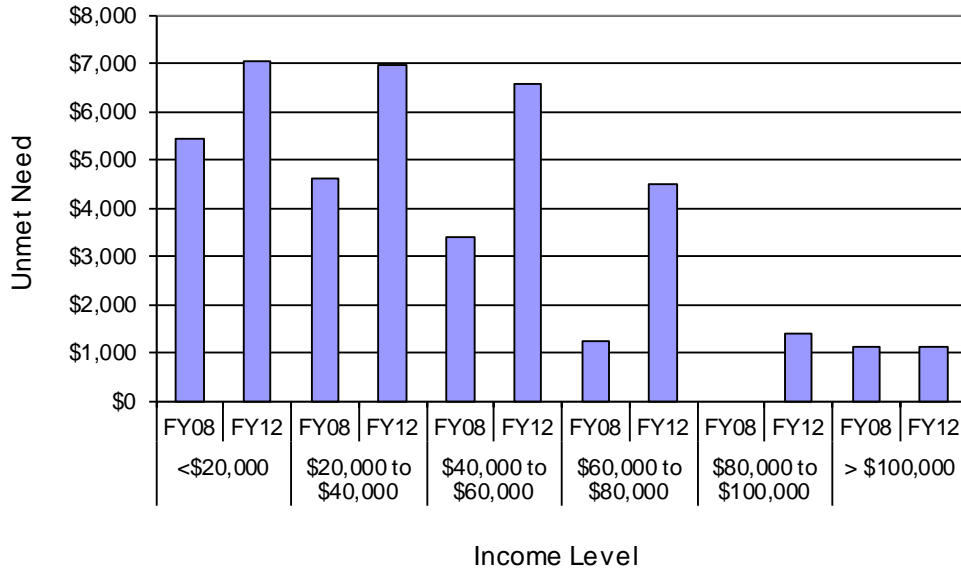
Total Financial Aid as % of Cost of Attendance by Income Level at the University of Missouri-Columbia, FY08 & FY12

Income Level	FY08					FY12				
	% COA Met by Source of Aid				% Unmet COA	% COA Met by Source of Aid				% Unmet COA
	Expected Family Contribution	Gift Aid	Work Study	Loans		Expected Family Contribution	Gift Aid	Work Study	Loans	
<\$20,000	3%	37%	0%	32%	28%	1%	34%	1%	32%	32%
\$20,000 to \$40,00	14%	34%	1%	26%	25%	6%	34%	1%	28%	31%
\$40,000 to \$60,000	30%	27%	1%	25%	17%	21%	25%	1%	23%	30%
\$60,000 to \$80,000	54%	20%	1%	20%	5%	42%	17%	0%	20%	21%
\$80,000 to \$100,000	76%	13%	0%	11%	0%	65%	12%	0%	17%	6%
>\$100,000	64%	11%	0%	19%	6%	71%	9%	0%	15%	5%

Source: UIDS, PeopleSoft  
IR&P/LCB 11/12



Figure 2.5  
 Average Amount of Unmet Financial Need by Income Level at  
 the UM-Columbia, FY08 vs. FY12



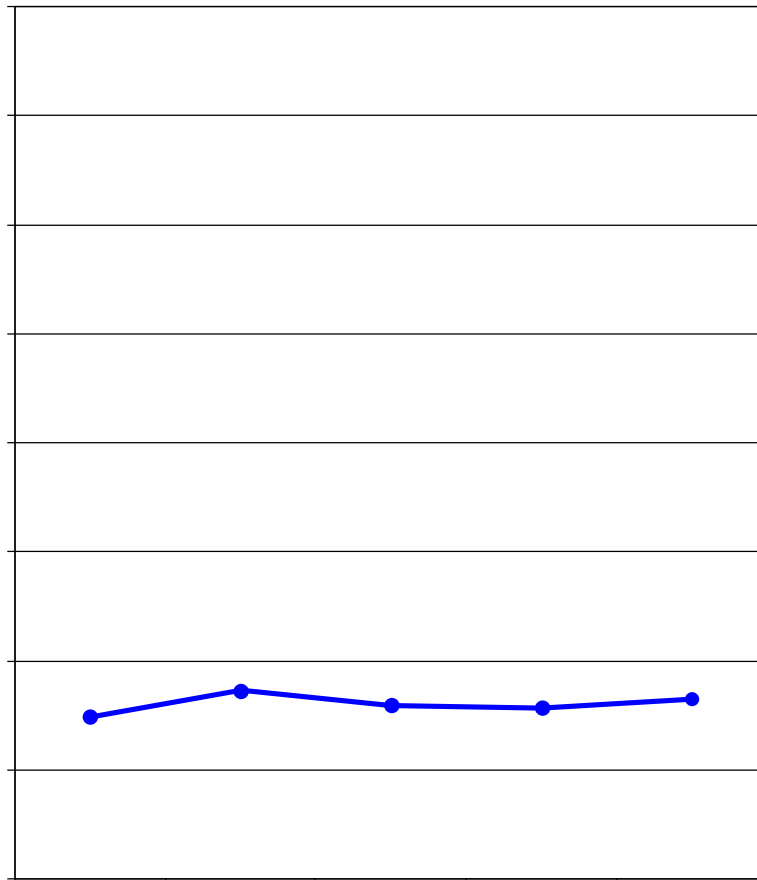
Source: UIDS, PeopleSoft  
 IR&P/LCB 11/12

Table 2.5

	FY08	FY09	FY10	FY11	FY12	FY08	FY09	FY10	FY11	FY12	# Change FY08-FY12	% Change FY08-FY12
Total Enrolled for 9 months (N)	1,245	1,159	1,347	1,443	1,540						295	24%
Cost of Attendance	\$19,472	\$20,673	\$20,866	\$21,530	\$22,337						\$2,864	15%
Less Expected Family Contribution*	<u>617</u>	<u>733</u>	<u>563</u>	<u>415</u>	<u>303</u>	3%	4%	3%	2%	1%	-314	-51%
Financial Need	18,855	19,940	20,303	21,115	22,034	97%	96%	97%	98%	99%	3,178	17%
Less Grant Aid	7,161	7,541	7,884	7,959	7,681	37%	36%	38%	37%	34%	520	7%
Unmet Need	\$11,694	\$12,399	\$12,418	\$13,156	\$14,353	60%	60%	60%	61%	64%	2,659	23%
% Grant Aid that Met Financial Need	38%	38%	39%	38%	35%							
Non-Grant Sources to Meet												







	FY08	FY09	FY10	FY11	FY12	5-yr # Change	5-yr % Change
Completed FAFSA, did not have a need	440	549	507	483	523	83	18.9%
Grant aid, no FAFSA	<u>304</u>	<u>316</u>	<u>290</u>	<u>301</u>	<u>302</u>	-2	-0.7%
Aid recipients with no need	744	865	797	784	825	81	10.9%
Aid recipients with need*	2,404	2,490	2,863	3,168	3,247	843	35.1%
Full pay / No aid	554	533	483	495	371	-183	-33.0%
Total of all full- time, Degree-Seeking MO UG	3,702	3,888	4,143	4,447	4,443	741	20.0%

\* All aid recipients with need completed a FAFSA and were not expected to pay the entire cost of attendance.

Note: Undergraduate Pharmacy and Medical students have been removed from this analysis.

Source: UIDS, EMSAS, and PeopleSoft  
IR&P/LCB 11/12



Table 3.1

Students with Need										
Type of Award Need*	# of Awards	Average Award	# of Awards	Average Award	# of Awards	Average Award	# of Awards	Average Award	# of Awards	Average Award
	716	\$1,643	447	\$1,976	118	\$2,005	122	\$1,796	153	\$1,431
Merit	585	\$2,725	1,024	\$3,509	1,158	\$3,716	1,262	\$3,136	1,391	\$3,213
Other**	666	\$2,539	44	\$4,449	92	\$2,731	83	\$3,686	82	\$4,376
Total	1,967	\$2,268	1,515	\$3,084	1,368	\$3,502	1,467	\$3,055	1,626	\$3,104

Students w 28.692 -0 T

Table 3.3

Total Financial Aid as % of Cost of Attendance by Income Level at the University of Missouri-Kansas City, FY08 & FY12

Income Level	FY08					FY12				
	% COA Met by Source of Aid				% Unmet COA	% COA Met by Source of Aid				% Unmet COA
	Expected Family Contribution	Gift Aid	Work Study	Loans		Expected Family Contribution	Gift Aid	Work Study	Loans	
<\$20,000	4%	28%	2%	29%	37%	1%	23%	1%	29%	46%
\$20,000 to \$40,00	12%	25%	2%	22%	39%	7%	23%	1%	23%	46%
\$40,000 to \$60,000	28%	19%	2%	19%	32%	19%	17%	1%	21%	42%
\$60,000 to \$80,000	49%	14%	2%	16%	19%	35%	12%	1%	16%	36%
\$80,000 to \$100,000	69%	12%	1%	13%	5%	57%	9%	1%	14%	19%
>\$100,000	76%	10%	1%	20%	0%	77%	8%	0%	12%	3%

Source: UIDS, PeopleSoft  
IR&P/LCB 11/12

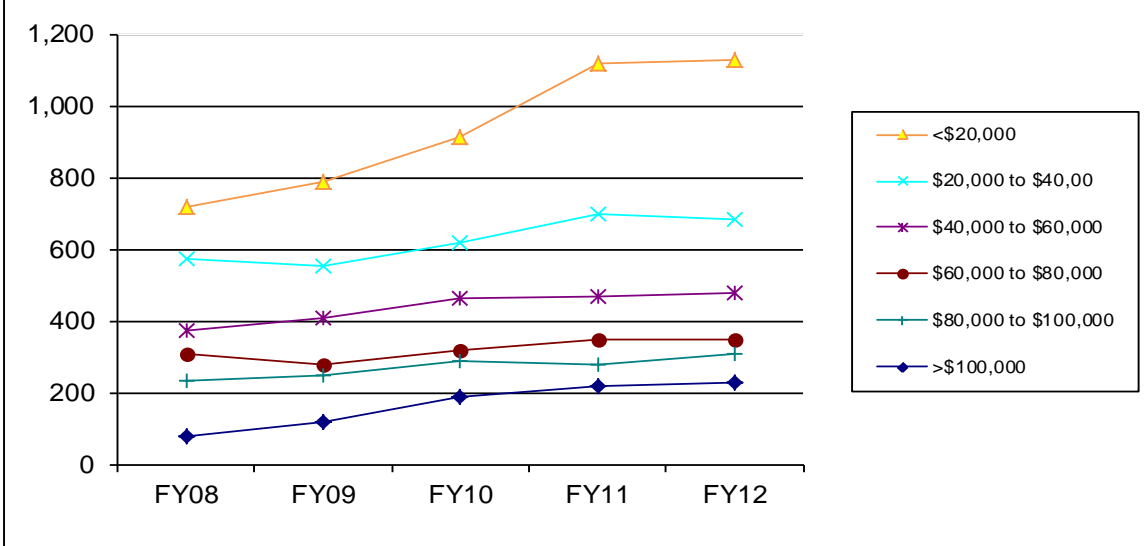
Table 3.4

Average PLUS Loan Awarded to PLUS Loan Recipients, Resident, Full-time, 654, (d t9104 0 0 11.115927 156]TJ 4.538 0 Td [(4)1(40)]TJ 3

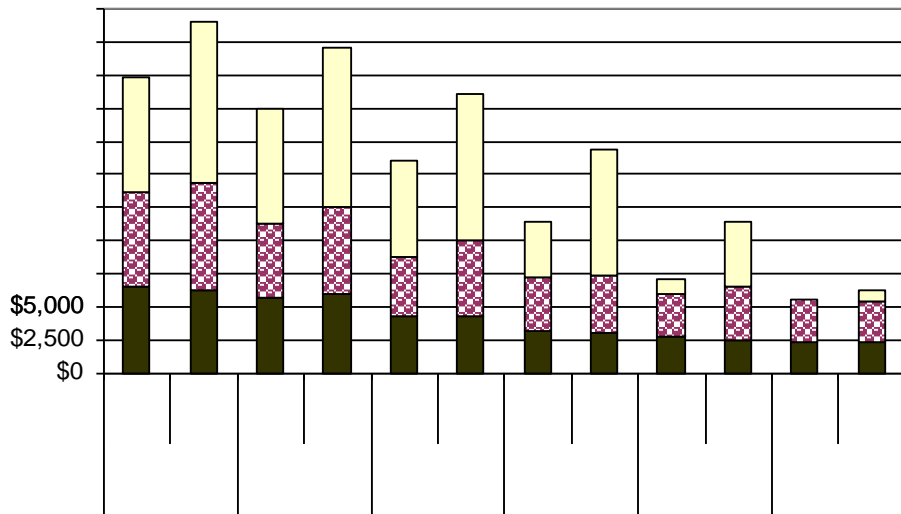
	FY11				FY12	
	N	Mean	N	Mean	N	Mean
With Need	129	\$8,291	109	\$8,447	316	\$9,631
Without Need	52	10,055	83	9,821	124	10,560
	181	\$8,798	192	\$9,041	440	\$9,893

Source: UIDS, PeopleSoft  
IR&P/LCB 11/12

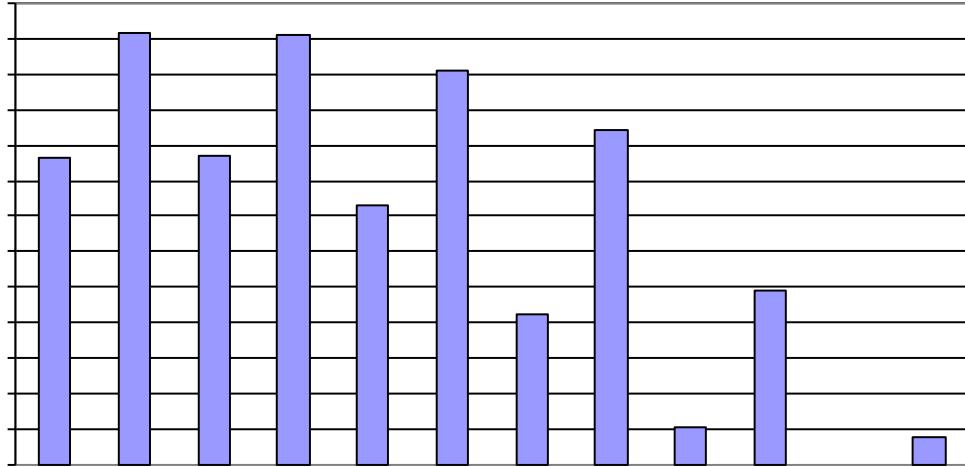
Figure 3.3  
 Number of Full-time, Degree-Seeking 9-Month Undergraduate Missouri Residents with Financial Need by Income Level at the University of Missouri -Kansas City, FY08 - FY12



Source: UIDS, PeopleSoft  
 IR&P/LCB 11/12



Source: UIDS, PeopleSoft  
 IR&P/LCB 11/12



Source: UIDS, PeopleSoft  
IR&P/LCB 11/12

Table 3.5

	FY08	FY09	FY10	FY11	FY12	FY08	FY09	FY10	FY11	FY12	# Change FY08-FY12	% Change FY08-FY12
Total Enrolled for 9 months (N)	716	787	913	1,120	1,127						411	57%
Cost of Attendance	\$23,226	\$24,103	\$25,284	\$26,260	\$26,970						\$3,744	16%
Less Expected Family Contribution*	<u>831</u>	<u>929</u>	<u>635</u>	<u>571</u>	<u>394</u>	4%	4%	3%	2%	1%	-437	-53%
Financial Need	22,395	23,174	24,649	25,689	26,576	96%	96%	97%	98%	99%	4,181	19%
Less Grant Aid	6,506	6,662	6,961	6,375	6,335	28%	28%	28%	24%	23%	-171	-3%
Unmet Need	\$15,889	\$16,511	\$17,688	\$19,314	\$20,241	68%	69%	70%	74%	75%	4,352	27%
% Grant Aid that Met Financial Need	29%	29%	28%	25%	24%							
Non-Grant Sources to Meet Remaining Unmet Financial Need												









Table 4.1

Students with Need

# of Awards	Average Award	# of Awards	Average Award	# of Awards	Average Award	# of Awards	Average Award	# of Awards	Average Award
-------------	---------------	-------------	---------------	-------------	---------------	-------------	---------------	-------------	---------------

Table 4.3

Total Financial Aid as % of Cost of Attendance by Income Level at Missouri S&T, FY08 & FY12

Income Level	FY08					FY12				
	% COA Met by Source of Aid				% Unmet COA	% COA Met by Source of Aid				% Unmet COA
	Expected Family Contribution	Gift Aid	Work Study	Loans		Expected Family Contribution	Gift Aid	Work Study	Loans	
<\$20,000	3%	44%	2%	30%	21%	2%	31%	1%	36%	30%
\$20,000 to \$40,00	15%	45%	1%	21%	18%	5%	35%	1%	28%	31%
\$40,000 to \$60,000	30%	35%	0%	21%	14%	20%	23%	0%	24%	33%
\$60,000 to \$80,000	56%	25%	0%	17%	2%	38%	17%	0%	22%	23%
\$80,000 to \$100,000	70%	24%	0%	11%	0%	55%	16%	0%	16%	13%
>\$100,000	74%	24%	0%	8%	0%	68%	17%	0%	12%	3%

Source: UIDS, PeopleSoft  
IR&P/LCB 11/12

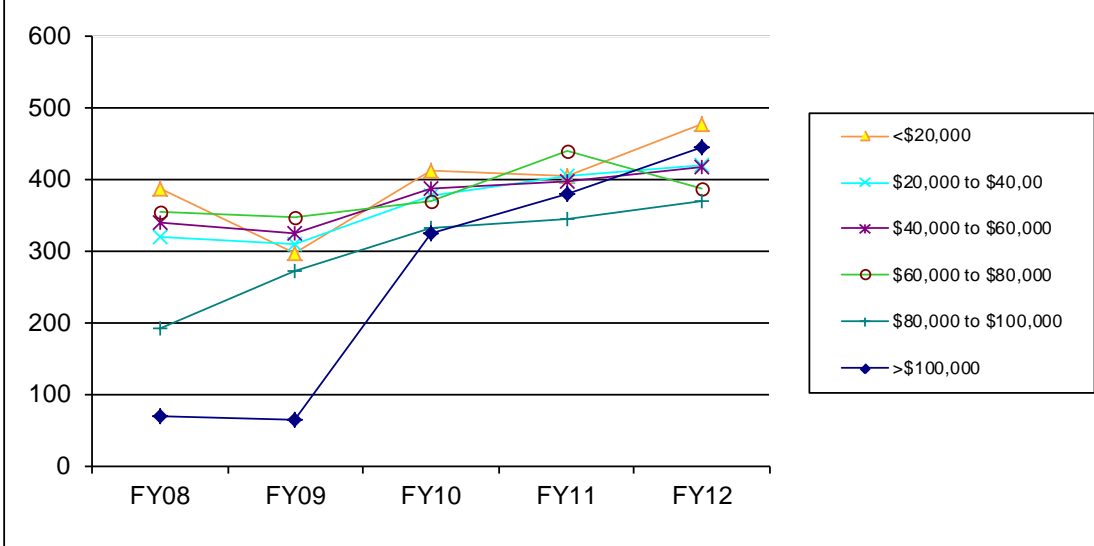
Table 4.4

Average PLUS Loan Awf 0.014 Tc -0.042 Tw 11.5484 0 0 12.8379 92.!

	FY11		FY12	
	N	Mean	N	Mean
With Need	96	\$7,529	115	\$6,832
Without Need	108	9,349	105	9,038
	204	\$8,493	220	\$7,885

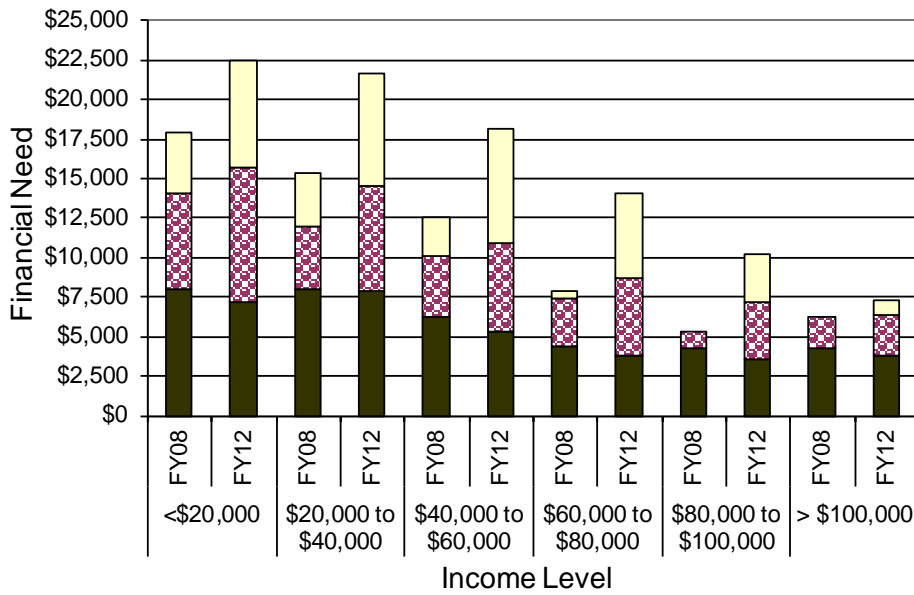
Source: UIDS, PeopleSoft  
IR&P/LCB 11/12

Figure 4.3  
 Number of Full -time, Degree -Seeking 9 -Month Undergraduate  
 Missouri Residents with Financial Need by Income Level at  
 Missouri S&T, FY08 - FY12



Source: UIDS, PeopleSoft  
 IR&P/LCB 11/12

Figure 4.4  
 Distribut42(bu.9/CS0 cs 0 7CS0 3712(4))JTJ ET Q q 94.154 GTJ E 7CS023



Source: UIDS, PeopleSoft  
 IR&P/LCB 11/12

Source: UIDS, PeopleSoft  
IR&P/LCB 11/12

Table 4.5

FY08 FY09





	FY08	FY09	FY10	FY11	FY12	5-yr # Change	5-yr % Change
Completed FAFSA, did not have a need	442	482	492	492	384	-58	-13.1%
Grant aid, no FAFSA	<u>423</u>	<u>332</u>	<u>265</u>	265			

Figure 5.2  
 Tuition and Required Fees vs. 9 -Month Cost of Attendance and Grant Aid for Full-



	FY08	FY09	FY10	FY11	FY12	5-yr # Change	5-yr % Change
Budgeted Cost of Attendance	\$22,518	\$23,435	\$24,055	\$24,913	\$25,303	\$2,785	12.4%
Tuition & Required Fees	\$8,264	\$8,595	\$8,595	\$8,631	\$9,038	\$774	9.4%
Average Grant Aid	\$3,642	\$3,370	\$3,897	\$3,922	\$4,255	\$613	16.8%

Source: UIDS, IPEDS Institutional Characteristics, PeopleSoft  
 IR&P/LCB 11/12

Table 5.1

Average Institutional Grant Awards Distributed to Resident, Full-time, Degree-Seeking

					FY10				FY12	
	# of Awards	Average Award	# of Awards	Average Award	# of Awards	Average Award	# of Awards	Average Award	# of Awards	Average Award
<b>Students with Need</b>										
Type of Award Need*	275	\$3,349	198	\$3,080	114	\$2,678	111	\$2,833	450	\$1,668
Merit	798	\$2,561	842	\$2,515	907	\$2,743	1,001	\$2,974	1,029	\$3,843
Other**	209	\$1,744	301	\$2,065	221	\$2,399	304	\$1,866	277	\$2,303
Total	1,282	\$2,596	1,341	\$2,497	1,242	\$2,676	1,416	\$2,725	1,756	\$3,042
<b>Students without Need</b>										
Type of Award	# of Awards	Average Award	# of Awards	Average Award	# of Awards	Average Award	# of Awards	Average Award	# of Awards	Average Award
Merit	342	\$2,588	358	\$2,934	347	\$3,170	359	\$3,160	330	\$4,212
Other**	138	\$2,635	149	\$2,633	113	\$2,483	108	\$2,774	99	\$3,474
Total	480	\$2,602	507	\$2,846	460	\$3,001	467	\$3,070.76	429	\$4,042.15

\*The amount and type of institutional need-based funding changes each year at UMSL.

\*\*Includes athletic aid and tuition waivers.

Source: UIDS, PeopleSoft

IR&PLCB 11/12

Table 5.3

Total Financial Aid as % of Cost of Attendance by Income Level at the University of Missouri-St. Louis, FY08 & FY12

Income Level	FY08					FY12				
	% COA Met by Source of Aid				% Unmet COA	% COA Met by Source of Aid				% Unmet COA
	Expected Family Contribution	Gift Aid	Work Study	Loans		Expected Family Contribution	Gift Aid	Work Study	Loans	
<\$20,000	4%	22%	0%	28%	46%	2%	21%	0%	28%	49%
\$20,000 to \$40,00	15%	18%	0%	23%	44%	8%	19%	0%	22%	51%
\$40,000 to \$60,000	28%	16%	0%	21%	35%	19%	17%	0%	17%	47%
\$60,000 to \$80,000	45%	13%	0%	18%	24%	39%	12%	0%	17%	32%
\$80,000 to \$100,000	61%	12%	0%	15%	12%	60%	11%	0%	15%	14%
>\$100,000	66%	9%	0%	15%	10%	76%	8%	0%	11%	5%

Source: UIDS, PeopleSoft  
IR&P/LCB 11/12

---

Source: UIDS, PeopleSoft  
IR&P/LCB 11/12

Source: UIDS, PeopleSoft  
IR&P/LCB 11/12

Table 5.5

	FY08	FY09	FY10	FY11	FY12	FY08	FY09	FY10	FY11	FY12	# Change	% Change
											FY08-FY12	FY08-FY12
Total Enrolled for 9 months (N)	954	828	938	1,029	1,091						137	14%
Cost of Attendance	\$23,467	\$24,095	\$24,863	\$25,832	\$26,148						\$2,681	11%
Less Expected Family Contribution*	<u>901</u>	<u>862</u>	<u>654</u>	<u>544</u>	<u>488</u>	4%	4%	3%	2%	2%	-413	-46%
Financial Need	22,567	23,233	24,209	25,288	25,660	96%	96%	97%	98%	98%	3,094	14%
Less Grant Aid	5,247	4,763	5,327	5,210	5,609	25,288	25,660					

Table 5.5 (Continued)

	FY08	FY09	FY10	FY11	FY12	FY08	FY09	FY10	FY11	FY12	# Change FY08-FY12	% Change FY08-FY12
Total Enrolled for 9 months (N)	352	230	271	261	266						-86	-24%
Cost of Attendance	\$21,664	\$22,836	\$23,498	\$24,026	\$24,353						\$2,690	12%
Less Expected Family Contribution*	<u>9,732</u>	<u>10,820</u>	<u>10,373</u>	<u>9,264</u>	<u>9,455</u>	45%	47%	44%	39%	39%	-277	-3%
Financial Need	11,931	12,016	13,125	14,762	14,898	55%	53%	56%	61%	61%	2,967	25%
Less Grant Aid	2,817	2,440	2,417	2,590	2,849	13%	11%	10%	11%	12%	31	1%
Unmet Need	\$9,114	\$9,576	\$10,707	\$12,172	\$12,049	42%	42%	46%	51%	49%	2,935	32%
% Grant Aid that Met Financial Need	24%	20%	18%	18%	19%							
Non-Grant Sources to Meet												
Remaining Unmet Financial Need												
College Work Study	\$12	\$0	\$15	\$33	\$21	0%	0%	0%	0%	0%	9	73%
Need-based Loans	3,521	3,320	3,476	3,764	3,541	16%	15%	15%	16%	15%	20	1%
Non-Need Based Loans	389	102	602	401	435	2%	0%	3%	2%	2%	46	12%

RTJ 4-Q-69.7591a27(nanc27(nancg1oAn76))TJ )Tj 4.al .4G5%5%64.615 /(5%)To51%nancg18 Tw 19.462 0 To \$12,861